



Leeds & 1000 Islands Historical Society



The front cover on this issue is a repeat of Issue #2, May 1994.
Here we see Mr. W.H.O. Foley and his wife Edith Truesdell arriving at
Lansdowne Fair in 1907. The exhibition Building is just visible in the upper
left. Not to leave him out, the horse's name was Guy.

This picture also formed the basis for our logo.

The picture was provided by Bruce W. Foley.

CONTENTS

Then and Now	Pg. #2.
The Beatty Diaries	Pg. #3.
At The Fair	Pg. #4.
Lansdowne Fair - 150 Years	Pg. #5.
Fair Past Presidents	Pg. #10.
Mini Kings & Queens	Pg. #11.
Lansdowne Fair Queens & Ambassadors	Pg. #12.
School Fairs	Pg. #13.
Dora Shields-Burns	Pg. #15.



Old McDonald's Farm

This building, built in 1876, was the first permanent building on the grounds. It once had additions to it. In 1922 it was converted to an "up-to-date" poultry building. The Junior Fair Board opened "Old MacDonald's Farm" here in 1981

Photo from Society files



Re-built Old McDonald's Farm

In 2012, the building was rebuilt using Original post and beam framework.

Photo by Bill Boulton

***THEN
and
NOW***

CONDOLENCES

We regret to report the death of a long time member since our last newsletter:

Thane Johnston

To their families and friends, our deepest sympathy.



MEMBERSHIP FEES (Canadian Funds Please)

General (Family) - \$15.00 Association - \$20.00 Corporate - \$30.00

Our membership term is Sept. 1 to Aug. 31

Memberships available at any meeting or by cheque to:

LTI HISTORICAL SOCIETY
Box 332 Lansdowne, Ont. K0E 1L0

NEWSLETTERS

As our newsletter binder was growing too large, we have decided to split it into two.

Back copies of our newsletters are available for \$2.50 each

Copies 1 through 20 are now available in a three ring binder. Cost \$62.00

Copies 21 through 40 - Cost \$62.00 - Binders with all copies 1-40 are still available. Ask for price.

Due to the weight and high cost of postage, if these have to be mailed, postage will have to be added.

Also available now is a binder with a coloured cover insert or the coloured cover insert alone.

Ask the Executive for prices.



THE BEATTY DIARIES

These notes from the diary of William Beatty deal with the Lansdowne Fair over a number of years.

- Jan. 9, 1864** Went to agricultural meeting at Johnston's school house (Rapid Valley).
Was elected president.
- Mar. 5, 1864** Went to an Agricultural meeting at Johnston's school house.
- Jan. 4, 1866** Went to Mallorytown to the annual meeting of their Agricultural Society.
After a good deal of squabble, it broke up entirely and divided the funds.
- Jan. 13, 1866** Went to annual meeting of our Agricultural Society. Was put in as director.
- Apr. 7, 1866** Went to agricultural meeting at the Station. (Village — Lansdowne Station).
- June 2, 1866** Went to agricultural meeting at Waldrons.
- July 11, 1866** Attended our fair at the Station. It was a good fair. There was a good many people at it.
- Mar. 29, 1867** I attended agricultural meeting at Waldron's. There were only six of directors there.
- July 19, 1867** Raising of the Drill Shed.
- Sept. 8, 1867** Went to fair at Station, There was a good turnout and a fine day.
- Jan. 9, 1869** Attended the annual meeting of Agricultural Society. Was elected President.
- Apr. 26, 1869** Drew 26 bushel of peas for Agricultural Society.
- Jan. 13, 1870** I went to the annual meeting of the Agricultural Society at Weston's. Was elected President.
- Jan. 11, 1871** Attended Agricultural Society meeting at Weston's Hall.
- Oct. 12, 1871** A fine day for our fair. Took 1st prize on a yearling bull, 2nd on two ewes.
- July 8, 1879** We all went to a strawberry festival for our church in the Agricultural Hall.
The Escott Band was up.



AT THE FAIR

From The Front of Leeds & Lansdowne Historical Society Newsletter #2 - May 1994

When it opens its doors this year, the Lansdowne Fair will have been held for 130 years. It has been an important feature of this community for all that time. Our President, Bill Boulton, has researched the minutes of the Lansdowne Agricultural Society and offers these observations.

The official minutes of an organization do not always make interesting reading. The 1869-82 minutes of the Lansdowne Agricultural Society, however, show an interesting evolution in the affairs of the Society.

As the first fair was held in 1864, the Society is well under way when the June 1869 meeting was held at Weston's Hotel (now the Trafford) home). The fair was still being held at the end of Grand Trunk Avenue on the property where D. Hall now lives and the Weston property, with the Drill Shed on King Street used for displays. Fair dates are a single day in early October.

The Society, from the beginning, was interested in the improvement of agriculture. In 1869, it organized a fall ploughing match and carried this on for at least ten years. They also kept rams and boars, and later beef breed bulls, for the use of members in improving their stock lines. Sunprize Oats were purchased for \$49.75 in 1870 and Red Clover for \$45.00 in 1873 to "be divided equally amongst all subscribers". With membership of 60 cents in 1872, you received a copy of "Canada Farmer" and the next year the "Farmer's Advocate".

In 1874, a committee was named to "provide a field or proper place to hold the cattle" for the fair. A piece of land was leased from Alex Cornett for fair grounds. Samuel Moorhead was contracted to build a six foot high board fence around the grounds. Rent for the land appears to have been \$50 per annum. The fence cost \$150. There was no money available for buildings so three directors offered a loan. Some type of building must have been built because, on October 4, 1874, Mr. Sam Johnston was to pick up all lumber and articles on the grounds and place them in the building, lock it and the gates.

In February, 1876, tenders were called "for erection of a building, 24' by 40'. 14' posts, timber 8 by 8 - 5 bents - sheeted up and down with good hemlock lumber and battened with battens 3" by 1" to be framed with two girts (variation on girth, meaning distance around) so as to have 4 nailings, 6 windows, 2 doors 6' by 9'." The successful bidder was Daniel Graham. The only mention of cost is payment of \$100 on account and the remainder as soon as possible. This building, we believe, still stands and is now used for poultry and pets.

No further mention is made of additional buildings but they must have been built. The minutes note in June 1879 "joist and floor main building and put such stairs as they think best" and in 1882 "build wings to the Agricultural Hall, improve cattle stalls and make first class horse track." The secretary's office was probably built in 1880 as the Board met there on the morning of the fair.

While the ladies may have attended the fair, that seems to have been their only activity. 1874 is the first mention of lady judges for domestic manufacture classes. In 1876, lace and wool work, pair hose, and scarf displays were entered in men's names, more likely the husband of the maker. In 1880, a committee of ladies was appointed to revise class K as the "board feels itself incompetent." To the end of these minutes, no female directors were elected and only some 100 years later was a woman elected president.

For the whole of this period, only two men served as President, Wallace Beatty until 1874, then John Cook. George F. Deane was Secretary-Treasurer at a salary of \$7.00 in 1869, raised to \$15.00 by 1882. Annual meetings were held in January at Weston's Hotel until 1877, then at the Stewart House, the site of the present Post Office, in 1878 and 1881. In 1879-80 and 82, it was held at Dickey's Hall (location unknown) where they paid Mr. John Dickey \$1.00 for its use.

Some things never change. As I write this just after an April snow storm of what many consider the never-ending winter of 1994, it is interesting to note that, on March 19, 1879, "few members met at secretary's office, the day being very stormy, there was no quorum."

Researched and written by Bill Boulton, May 1994.



LANSDOWNE FAIR 150 YEARS

*Material for this article has been gathered from three sources;
William Beatty's Diary, Agricultural Society minutes and newspaper clippings.*

THE BEGINNING:

Lansdowne fair was first held in 1864. The minutes for 1864 to 1869 are missing, so for these five years we rely on William Beatty's diary (see page #3). We know he attended the first meeting of the Society in Johnston's School (Rapid Valley) in January 1864, and was elected president.

At this time the fair had no property of its own. The fair was held at the end of Grand Trunk Avenue, on the triangle between the railway and King Street. This was probably a busy site as it also contained Weston's Hotel, William Vanorman's store and the post office with William H. McNeil as postmaster. Cattle were tied to the railway fence. Displays were housed in the drill shed on King Street.

The fair was a one day event, usually held in September or early October. In 1866 it was held on July 11, in 1869, September 8, and in 1871, October 12. In 1875 admission was 10 cents, children under 12 free.

Membership fee in the society in 1872 was 60 cents. With your membership you received a subscription to Canadian Farmer. In 1873 it was changed to a subscription to The Farmer's Advocate.

The society operated on a very low budget in those days. Treasurer William Thompson reported in 1870 that receipts were \$298.67, and expenses were \$264.85, leaving a balance of \$33.82; 1871 balance was \$69.97; 1872, \$74.10; 1873, \$8.18; and 1874, \$107.65.

The Agricultural Society was very pro-active in promoting the improvement of agriculture. For several years they organized a ploughing match at a local farm some time later than the fair. In 1870 they purchased 16 bushels of Surprise Oats for \$49.75 to be distributed among members. In 1873 it was \$45.00 worth of Red Clover seed. They owned two boars and two rams. These were placed with local farmers who were paid for their care and available for breeding purposes for all members. Later two beef breed bulls were purchased.

PROPERTY:

In 1875 the society started to look for a piece of land to establish a permanent fair grounds. A contract was signed with William Cornett for a piece of land at the north end of the village for a period of ten years. A contract was let to build a 6 foot high fence around the property. In 1884, six acres of land was purchased from Samuel Johnston for \$600.00. In 1872 they purchased another 3 acres north of original lot for \$400.00 to improve the track. Another 4 acres was purchased for \$600.00 from S.E. Johnston to again improve the track. In 1922 another acre was bought from Mr. Johnston for \$100. to complete the track making it one half mile. Three acres on the western limits was purchased for \$1,000.00 in 1970. A parcel of land was sold for the water tower in 1971. The Ministry of the Environment took an easement along the west and north limits for test wells for the water system in 1973. The original plans for Wedgewood Street would have taken it north through the grounds, about the center of the horse barn. In 1989 Council closed the right of way and turned it over to the Agricultural Society.

BUILDINGS:

When the land was leased in 1874 there was no money for building. Three of the directors offered money; the society to re-pay when possible. Some sort of building must have been built, as in 1875, the minutes read; "Mr. Sam Johnston to pick up all lumber and articles on grounds and place in building, lock building and gate".

In February 1876 the society advertised for the erection of a building; "Erection of a building 24' x 40', 14' posts, timber 8" x 8", 5 bents, sheeted up and down with good hemlock lumber, and battened with battens 3" x 1", to be framed with two girts so as to have 4 nailings, 6 windows, 2 doors 6' x 9'. Tenders to be opened March 6". Daniel Graham received the contract. The only mention of cost is: "Pay Daniel Graham \$100.00 on account and remainder as soon as possible". In 1879 joist and floor and stairs were added. Wings were added in 1882. In 1883 another wing was added on the west side, cost to be not more than \$100.00. The additions were moved when the new exhibition building was built. (Continued on Page #6)

Heritage Organization Grant

The Historical Society made an application to the Provincial Ministry of Culture for a Heritage Organization Development Grant. Our application was approved, and we received \$1,545.00

This grant will be used to cover the cost of preparation and distribution of our Newsletters.

We wish to thank the Ministry of Culture for this assistance.



(Continued from Page #5)

LANSDOWNE FAIR 150 YEARS

The main part of the original building remained and was converted into an up-to-date poultry building in 1922. The Junior Fair Board opened the original Old MacDonald's Farm here in 1981. 2012 saw the building dismantled, and using the original post and beam frame, completely rebuilt. It is now home to the junior exhibits.

In 1878, \$100.00 was spent for 1500 feet of cedar lumber to build pens for the animals. A cattle shed to hold 50 head was built along the fence in 1885. More were added in 1899. Although some of these pens were torn down as early as 1939, the pig sheds behind the grandstand remained until 1991.

The "red" agricultural hall was built in 1896. It was 36' x 80', cruciform in shape, two floors, 12' down stairs, 10' up. Cost was between \$1,200.00 and \$1,353.00 on a contract to Haig and Stephens. Herb Leacock handled the painting, two coats of Venetian red trimmed in white for \$61.00.

In 1892 a judges stand was built for the race officials.

A well, 19'-6" deep, was drilled, at a cost of \$29.25, to supply water for the fair in 1886.

In 1906 a set of plans for a grandstand was drawn by Benjamin Dillon of Brockville. It was built opposite the judges stand, leaving a track width of 36'. It was 50' long with seating for 200. Wm. McConnell was the builder.

Several food spots were built over the years. The first one, called a "grocery booth" was built in 1908 in the south-west corner of the grounds. Church Street had not been opened yet. The Agricultural society had to get permission from the Anglican Church to cross their land to get to the booth.

The present horse barn was built in 1914; 36' x 100', it cost \$1,394.02. George Stephen received \$190.00 for the carpenter work. The society approached council for a grant to cover cost.

Electric service had come to Lansdowne in 1929. In 1930, Haig and Burns wired the fair buildings at a cost of \$753.34.

A portable dance floor, 24' x 45' was built in 1931. This consisted of 6' x 9' sections. During the fair it was set up in front of the red building with the orchestra on a platform against the north – east corner. Dances were 10 cents each. Later they were 3 for a quarter, tax included. At other times this floor could be erected in the arena, or rented to other groups.

In 1956 the pavilion in front of the grandstand replaced the judge's stand and the open stage which had been there. Short of money again, \$3000.00 had to be borrowed.

Canteens behind the red building and at the end of the grandstand were vertical rough lumber buildings with a window which opened into a counter for serving. I do not believe they even had a floor. Booth 2 was replaced in 1967 with the present white building. Canteen 3, at the grandstand, was dismantled about the same time.

As the fair grew, and the fair board began to do catering, neither the office, built about 1880, nor canteen I were adequate. In 2003 canteen 1 was dismantled and a new building erected. This contains larger office space and a full kitchen.

The Armisteads were involved in the fair for a number of years. When Mrs. Armistead died, money was left for a memorial on the grounds. In 2010 the Armistead Pavilion was erected near the kitchen. This provided a permanent covered area, replacing the canopy which had been used for many years.

HORSE RACING:

Horse racing has been a part of the fair from the beginning. Before they had a fair grounds, racing took place on King street. The starting line was at the top of the hill in the west (Freda White's present home) and finished at a maple tree in the east (presently Lackie's Feed). The judge and timer sat on a limb in the maple tree.

A track must have been established before 1890, as 3 additional acres of land was purchased in 1892 to improve the track. It was improved again in 1905 at a cost of \$105.00. In 1922 more land was purchased to make the track one half mile. Local owners and drivers were quite common. In 1920 Tilly Jim owned by Archie Johnson won three 3rd places.

Mr. Johnson also raced Robert Murphy.

In 1922 it took 13 heats to declare a winner. The final winner was Ripple Audobon, another local horse.

Lansdowne Fair is one of the few fairs to still sponsor races. It has one of the best built and maintained tracks in Eastern Ontario. Since 1986, Steacy Stables has used the track as a training facility, and maintains the track.



Archie Johnson
with Robert
Murphy - 1920

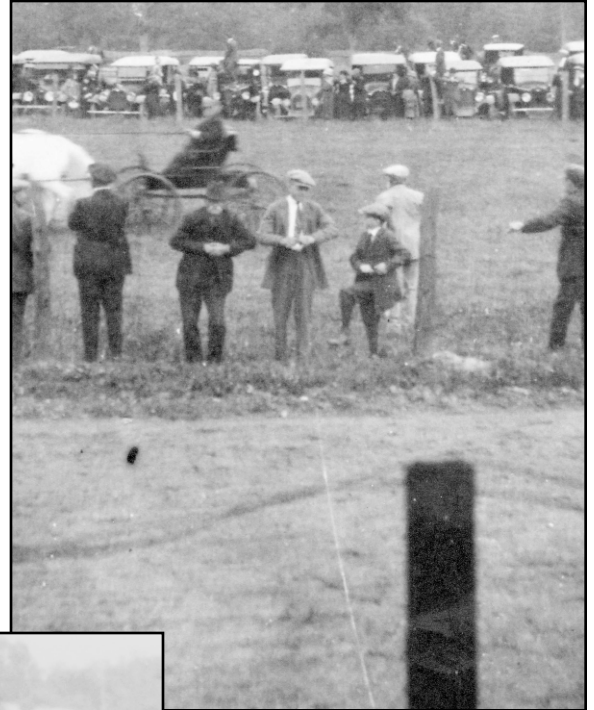
*Photo courtesy
Connie Burns*

(Continued on Page #7)



(Continued from Page #6)

LANSDOWNE FAIR 150 YEARS



Horse Show c1920

All Above Photos from
Society Files

JUNIOR FAIR BOARD:

In the spring of 1985 a youth group known as the “Junior Fair Board” was formed by Vicki Grier and Bruce Turner. This group involved 11 to 18 year olds. Many were children of members of the senior board. It had a social side, but also gave assistance in many tasks. They raised money through raffles and sales. Money raised was used for improvement projects around the grounds. They have done painting and cleaning around the grounds, as well as involvement in parades. It is an ongoing and vital group.

ENTERTAINMENT:

In the early days, it was often local bands that provided entertainment. In 1876, it was the Lansdowne brass band. Several times it was the Gananoque Senior or Junior Town Band. Once it was a brass band from the Gananoque Carriage Works who were paid \$10.00. The entertainment was usually in the town hall. In 1930, the Royal Ambassador Orchestra played for a concert in the town hall and a dance in Peck’s Hall.

Many well known names have played the fair over the years, including The Carleton Show Band, Gordie Tapp, Ann Banks, Wayne Rostad, Ronnie Prophet, Gail Gavin, and many more. For the past few years, Saturday evening has hosted the demolition derby.

(Continued on Page #8)



(Continued from Page #7)

LANSDOWNE FAIR 150 YEARS

TRIVIA:

- 1878 Gambling not allowed within 700 yards of grounds
- 1885 Good meal; warm meat, bread, cheese, tea, 30 cents, for convenience of visitors and others.
- 1886 Lansdowne had a lacrosse team which played on the grounds.
- 1889 William Beatty joined board in 1864 still serving as a member of the board.
- 1896 Requested Council to appoint a constable to keep peace in village during fair.
- 1903 George F. Dean retired as secretary after serving for 36 years.
- 1910 Forbid cigar smoking at board meetings.
- 1911 First mention of rides at fair, a merry-go-round.
- 1915 8th. Mounted Rifles used grounds and buildings for training during their stay in Lansdowne.
- 1917 Asked Council to place man at corner at top of hill to direct traffic during fair.
- 1919 First lady directors elected to board.
- 1926 Free tickets given to all students within 15 mile radius.
- 1927 First 3 day fair.
- 1940 Charles F. Rath, president in 1893, was honoured on his 100th birthday. He had attended all but 1 fair in 76 years.
- 1946 S.C.E. Dixon retired as secretary after serving for 26 years.
- 1988 First lady president, Elaine Steacy, elected.



Midway - 1972

*Photo courtesy
Ted Hewitt*

Exhibition Hall

*Courtesy
Lansdowne Agricultural
Society*





(Continued from Page #8)

LANSDOWNE FAIR 150 YEARS

LANSDOWNE ARENA:

In 1931 a group of local men formed the Lansdowne Arena Company. Capital stock was \$20,000.00 with shares selling for \$10. In March a delegation met with the fair board with the objective of having an indoor rink built. The Fair Board agreed to take \$1,500.00 in stock and furnish the land. It would be leased to the arena company for 99 years, with the fair having use of the building from April to October for fair purposes. It was constructed and open the next year. When the Brockville arena burned in 1937, the Brockville Magadomas hockey team played their home games here.

Through the years the arena was allowed to deteriorate. In 1969 a committee from the Arena Company discussed dissolving the company. Two years later they were back discussing an addition to the arena to house new dressing rooms and washrooms. Land was not available, and the proposal died. In 1976, the Arena Company offered to sell the building to the Agricultural Society for \$1.00. The Society accepted the offer. Thus the Lansdowne Arena came to an end. The fair now used the building for cattle during the fair and storage the remainder of the year.

In June 1987, the old arena was destroyed by fire. This left the fair with no shelter for cattle. A 40' x 80' tent was rented for the 1987 fair. Plans were drawn for a 60' x 100' replacement building. A new building costing \$40,000.00 was built, using \$25,000.00 insurance money and a great deal of volunteer labour. The ribbon cutting for this new building took place after the fair parade in 1988.

Lansdowne Arena
Photo from Society Files



Lansdowne Arena Fire
*Photo courtesy
Lansdowne
Agricultural Society*



Past Presidents

1864 - 2014

List of fairboard presidents since inception

1864	Wallace Beatty *	1958-1959	Wilfred Fodey*
1875	John Cook*	1960-1961	Roy Foley*
1890	J. R. Redmond*	1962-1964	Willis Shields*
1893	C. F. Rath*	1965	Alex Burtch*
1900	Adam Beatty*	1966-1967	Bernard Lappan*
1905	O. W. Landon*	1968-1969	Lorne Steacy*
1908-1909	R. A. Foley*	1970-1971	Martin VanDenKerkhof*
1910	James H. Moxley*	1972-1973	Gordie Steacy
1911-1912	Firman Cross*	1974-1975	Patrick Kennedy*
1913-1914	B. Cook*	1976-1977	Brian Huskinson
1915	George McKay*	1978-1979	Jim Foote
1916-1918	R. Shields*	1980-1981	Brian Smith
1919	J.R. McDonald*	1982	Robert Carey
1920-1927	John Lappan*	1983-1984	Wayne Shields
1928	Thomas Steacy*	1985-1986	Walter Humphrey
1929	O. G. Corriety*	1987	Robert Filson
1929-1930	A. V. Turner*	1988-1989	Elaine Steacy
1931-1932	Joseph Shields*	1990-1991	Harold Grier*
1933-1934	Ellis H. Foley*	1992	William Grier
1935-1936	David Graham*	1993-1994	Brian Cornish
1937-1944	Roy Summers*	1995-1996	Robert Carey
1945	A.V. Turner*	1997-1998	Todd Grier
1946	Urban Warren*	1999-2000	Jamie Grier
1947	Ivan Doak*	2001	Todd Grier & Brian Cornish
1948	E. H. Wills*	2002-2005	Wendell Webster
1949	Glen Bean*	2006-2010	Todd Grier & Todd Barclay
1950	A. W. Burns*	2011	Robert Carey & Todd Barclay
1951	Clarence McDonald*	2012- 2013	Rolly Serson & Todd Barclay
1952	Edwin Warren*	2014	Rolly Serson
1953	Willis Shields*		
1954-1955	Ernie Steacy*		
1956-1957	John Foley*		

*Indicates Deceased

*Many thanks for 150 years of volunteer service
to the Lansdowne Agricultural Society!*

Mini Kings and Queens (1976 - 2013)

1976	Amanda Alguire	Robert Napper
1978	Sarah Fodey	Jamie Grier
1979	Julie-Ann Kelsey	Mark McIntosh
1980	Erin Kirkby	Jeff Lenard
1981	Kristi Steacy	Jeremy Steacy
1985	Amy Mullen	Jason Smith
1986	Nancy Shaw	Tim Carl
1987	Cindy Carl	David Nash
1988	Sarah Donovan	Patrick Dawson
1989	Shannon Robertson	Roger Currie
1990	Bobbi-Jo Mack	Jason Brown
1991	Elizabeth LaFirst	Jeff MacNeil
1992	Carley Michie	Cole Tedford
1993	Rebecca Haigh	Jordan McCalpin
1994	Courtney Buck	Cameron Steacy
1995	Jessica Marsden	Jacob Knight
1996	Jennifer Huntley	Eric Campbell
1998	Mackenzie Olmstead	Joshua Miscallef
1999	Danyelle Alguire	Brad Grier
2000	Maddison Paquette	Kevin Berry
2001	Nicole Van Allen	Drew White
2002	Bobbi-Jo Willmott	Jonah Paquette
2003	Hilary Gray	Shane White
2004	Andrea Grier	Matthew Micallef
2005	Rebecca Sharp	Jacob Turner
2006	Kendra Beattie	Connor Randall
2007	Brianna Anderson	Jake Lawler
2008	Emily Kelly	Cole Johnston
2009	Madison Templeton	Kody Wallis
2010	Victoria Micallef	Tristan Wellbanks
2011	Ella Murphy	Adam Byers
2012	Krystalyn Sullivan	Declan McDonald
2013	Arden Lowry	Cohen Smith



WINNER

Please Help Us Update Our Records

If you were a winner and your name is not listed please call our office at 613-659-2124 and leave a message with your name and the year you won along with the name of the other winner.

We apologize to anyone whose name has been missed or otherwise misrepresented.

Lansdowne Fair Queens (1963 – 1999)

1963	Shirley (Watson) Chamberland
1964	Shirley Ann (Modler) Hodgson
1965	Glenda Fulford
1966	Ann (Peck) Warren
1967	Joy (Slack) Carswell
1968	Margaret (Baker) McHenry
1969	Colleen (Thompson) Tedford
1970	Beverly (Blanchard) Address
1971	Debbie (Berry) Andrews
1972	Wilhelmina (VanDenKerkhof) Leadbeater
1973	Carrie Lou (Cross) Fox
1974	Carrie Lou (Cross) Fox
1975	Cathy (Gray) Thompson
1976	Janice (Cross) Asbreuk
1977	Wendy De Zeeuw
1978	Lisa Gray
1979	Madonna Funnell
1980	Janet (Leighton) Gaylord
1981	Lisa (Cross) Slack
1982	Connie Cuthbert
1983	Tammy (Young) Thompson
1984	Lori (Young) Hawkins
1985	Sheryl (MacMillan) Kerr
1986	Heidi Robinson (Miss C.N.E. - 1987)
1987	Shannon (Delaney) Shannan
1988	Mary Anne Napper
1989	Wendy (Carey) Schleger
1990	Cindy Carswell
1991	Paula (Boyd) Pilon
1992	Christa Carswell
1993	Leslie (Campbell) Grier
1994	Corinna (Smith) Gatcke
1995	Kelly (Smith) Dillabough
1996	Jeanette Modler
1997	Lisa Asbreuk
1998	Lyn (Mallen) Charboneau
1999	Pam (Fodey) Schnurr

In the year
2000
changes were made
to the Fair Queen
Program
to allow males to
compete in the
competition.

The title was
changed to Fair
Ambassador.





(Continued from Page #12) **LANSDOWNE FAIR AMBASSADORS - 2000 - 2013**

2000	Tessa (Kehoe) Dwyre	2007	Amanda Paquette
2001	lidsey Prosser	2008	Erin Lynch
2002	Emily Offord	2009	Katherine Geekie
2003	Sarah Donovan	2010	Sarah Grier
2004	Laura Prosser	2011	Leslie Welch
2005	Jen Miller	2012	Katie Brandley
2006	Amy (Livingston) DeRoos	2013	Olivia Proctor

SCHOOL FAIRS

School fairs probably began about 1910 and continued until 1941 when they were incorporated into the regular fair. The Gananoque Reporter, September 22, 1914 reported: Schools participating in the school fair were Ebenezer, Fairfax, Wilstead, Rapid Valley, Dulcemaine, Greenfield, Tilly, Holland, Rockport, Selton, Oakville, Sand bay, and Lansdowne. Miss Bernice Grier, Greenfield, won most points and received a special prize of \$1.00.

Here are two memories of school fairs.

Memories of Ross Grier, School Fair Late 1930's

School Fairs used to be held at a different date than the agricultural fair, but were held on the fair grounds. I am not sure of the date but it was sometime in September after school had started.

Our exhibits were in a tent pitched west of the red fair building which was not open. I am not sure of what all the exhibits were, but various crafts and art work such as they have now. I remember making a tea pot stand for hot tea pots and a door knocker from a piece of white birch and a cut out for a red headed woodpecker and a long string attached so that when you pulled the string the woodpecker would peck on the wood, making a knocking sound. Also one year I knit a tea cosy. A very fancy one, to fit over a tea pot so it wouldn't get cold. We had a teacher, Margaret McCormack, who taught us to knit, the boys as well as the girls. She was a wonderful artist and later taught art in a city school. I remember to this day a lot of things she taught us.

For the other part of the fair, we all marched like the army around the grounds in front of the red building. Each school marched in a group with its own banner, with two of the pupils at the head of the group carrying it. The banner would have the name of the school and school section on it. I still have a banner made by my mother, Bernice Grier, when she was a teacher in Tilly School in the 1920's. It has a drawing of Tilly School on it, and is made of flour bags which were used to make a lot of things in depression years.

Each school had its own drill and school yell the children went through and then they would line up in front of the grandstand. I remember one year it was in front of the red building and J.R. Osler, the agricultural representative along with another gentleman were on the stand and gave a congratulatory speech.

We ended up having foot races and other kinds of contests in front of the grandstand. I believe there was a hot dog stand. I think they were 5 or 10 cents. I know this was before WW II. I do not know when the school fair was amalgamated with Lansdowne Fair.



Photo Courtesy Lansdowne
Agricultural Society



Ross Grier
with
School
Fair
Banner

*Photo from
Society
Files*



SCHOOL FAIRS

Memories of Audrey Hill (Newell), School Fair 1938

The school fair was held in late September after school had started, when the crops were all in.

The pupils were encouraged to enter exhibits in different categories for the appropriate age group. These entries included samples of sewing, knitting, baking, woodworking, writing, art work, growing and displaying vegetables and samples of different grain crops.

After many days of planning, preparation, perseverance and practicing, the excited children, their parents and teachers gathered up their entries and transported them to the red building on the fair grounds and placed them on display ready for judging. I remember practicing and practicing "writing" before handing in my sample. Under mother's watchful eye, I managed a quilt block and bran muffins; also art – draw and colour the Union Jack.

Pupils were each given ribbons and "points" for winning entries. One pupil from each school who received the greatest number of points was awarded a certificate. I still have my points certificate. These points were totaled and the results forwarded to each school. If a school won the points trophy for three years, they were allowed to keep it.

(The Historical Society has one awarded to Rapid Valley school)

I seem to remember that we brought our own lunches.

In the afternoon a parade of the participating schools was held. One pupil from each school was chosen by the teacher to lead their school carrying their school banner. One by one the schools paraded in front of the grandstand where the judges were assembled. Each school was awarded points for formation, precision work and of course for marching. There was always a strong competitive aspect to these parades.

Later games and races such as three-legged, tug of war and maybe baseball took place.

At the end of the day a tired, but happy, group would be transported home; many expected to help with the chores on the farm.

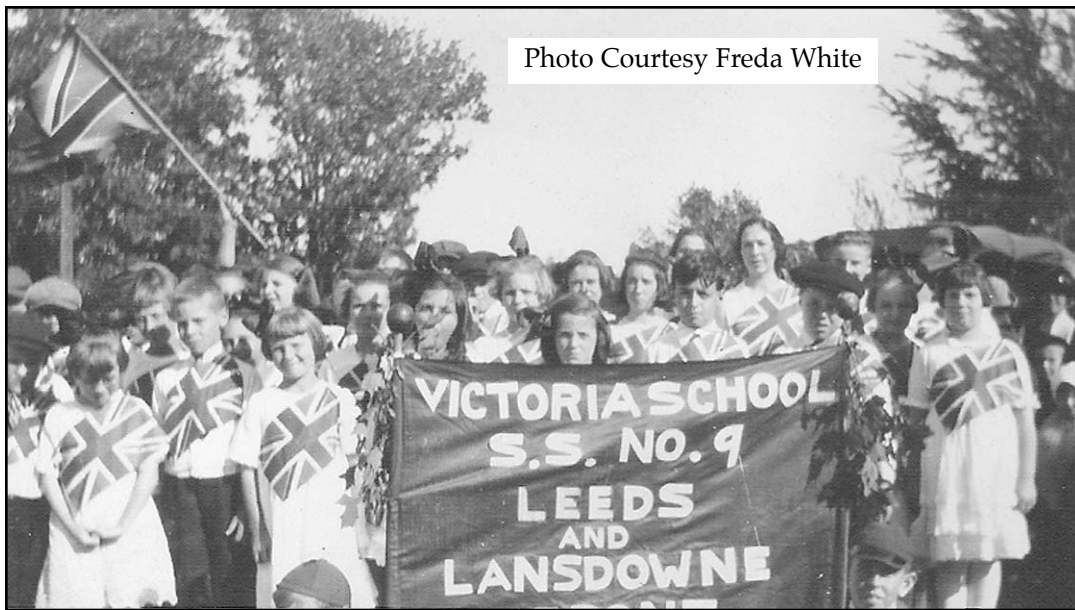


Photo Courtesy Freda White

*To continue work like this more pictures of the past are needed.
If you have old pictures of the area, consider donating them to the Historical Society,
or directly to the LIT Archives
If you wish to keep possession of the pictures, consider allowing them to be digitized.
Pictures are returned to you immediately.*



DORA SHIELDS-BURNS

Dora Shields-Burns, at over ninety, has been attending or involved in Lansdowne Fair for almost seventy years.

Dora grew up just north of Gananoque, near the Maple Grove Road. She did not attend the fair when she was growing up because in those depression days there was neither money nor time for such entertainment.

She attended Maple Grove School. She remembers school fairs being held at the local school level. The one for Maple grove was held in a field just west of the present County Road 32, near her home. Most of the material competing for prizes was school work, writing, art work and stories. There were also vegetables and crops grown by the pupils at home. Dora remembers making muffins (under her mother's supervision) and entering them.

Dora married Willis Shields in June 1945 and moved to the Shield's farm on the Eden Grove Road, just west of Lansdowne.

The Shields family had a long history of involvement with the fair. Willis served on the board, as his grandfather, Joe, also had. Thus it was natural that Dora would attend the fair and eventually get involved on the board.

With four boys growing up, Dora found little time for activities outside the family and farm. It was not until after the boys were in their teens that Dora joined the fair board and eventually became director of the junior division. This division looked after all of the school and children's work. She served in that capacity for about 10 years.

Dora remembers the dances on the portable dance floor set up in front of the red building. The orchestra, usually Nina (Moore) Webster, played on a platform against the building. She also remembers the entertainment playing on the old open stage in front of the grandstand before the present pavilion was built.

Many changes have taken place during Dora's time at the fair. She has seen many improvements. She feels the number and quality of the exhibits has improved greatly. The horse show, especially the heavy horse class, has more horses and of a better quality. Her son, Wayne, is director of the heavy horse class. There have been many other changes which have added to the improvement.

I expect we will see Dora, on the Saturday afternoon of the fair, in her usual front row seat on the grandstand, watching the races and heavy horse show.





Paid up MEMBERSHIPS as of JUNE 15, 2014

LAST NAME FIRST NAME	LAST NAME FIRST NAME	LAST NAME FIRST NAME	LAST NAME FIRST NAME
AALDERS, WINNIE	GEMMELL, JOHN	McCRADY, EARL	SMITH, SUSAN
ABRAMS, GAIL	GIBBINS, BOB	McCREADY, BRUCE & MAXINE	SNETSINGER, MARY A.
ADAMS, WINSTON & WILMA	GIBBINS, CHRIS & GINNY	McDONALD, ED & SHARON	SORENSEN, JOHN & LOUISE
ARBUCKLE, DON & GLORIA	GIBSON-LANGILLE, SHIRLEY	McDOUGAL, MARILYN	STEACY, MARLENE
BARR, DAVID & PENNY	GILBERT, DAVID	McELROY, GLEN & MARG	STEACY, PAUL
BELL, EMILY & HOWARD	GILBERT, DOUG & JUNE	McKAY, MARION	STRUTHERS, VELMA
BICKERTON, DOUG & ANN	GILL, JULIA	McNAMEE, JACK	SWAN, MARION
BOUCAUD, JOAN	GRAHAM, ANDREW & KATHERINE	MERCIER, PIERRE	SWARBRICK, KEITH & JANET
BOULTON, WM.	GRAY, CHARLES & ANN	MICHIE, BOB & ROSE	TEDFORD, ROGER & CONNIE
BOYD, JIM & ELIZABETH	GREBBY, JOHN & MARIE	MOIR, RONALD	TRUESDELL, ERIC & JACKIE
BRADLEY, BETTY	GRIER, JAMIE & TRACIE	MONTGOMERY, CHARLES	TURNER, DOUGLAS
BROWN, DEBORAH	GRIER, ROSS & IRENE	MONTGOMERY, LEON	WAND, KAREN
BROWN, JACK	GRILLS, DIANA	MOORHEAD, LORNE & MARGARET	WARREN, GEORGE & BETTE
BURNS, DON & PAT	HAFFIE, JOHN & DOREEN	MORRISON, BOB & BARBARA	WARREN, GLENN & TRUDY
BURNS, GEORGE & CONNIE	HAFFIE, LARRY	MOUG, NORMA	WEBSTER, BEATRICE
BURNS, JOAN	HAIG, HAROLD	MURRAY, PETER	WEBSTER, DAWN
BURNS, KARL	HALL, MYRTLE	NALON, JOHN & BARBARA	WEBSTER, DAVID & KAY
BURNS, KEITH	HART, LINDA	NEWELL, AUDREY	WEBSTER, ERIC & NANCY
BURNS, TOM	HEATON, STEPHEN	NUTTALL, BEN & HILDA	WEBSTER, GEORGE & REBECCA
BURTCH, KATHLEEN	HEWITT, TED & PAT	NUTTALL, JAY	WEBSTER, JEAN
BURTCH, ROBERT	HOUSTON, WILLIAM	NUTTALL, LINDA & CHOJNACKI, MARK	WHITE, LARRY & CHERYL
CAMPBELL, JIM	HUNT, DOREEN	OFFORD, HOSS & SANDI	WHITE, FRED A
CHISAMORE, DON & DANNIE	HUNT, MORLEY & ANNE	O'GRADY, CHRIS	WILLIAMS, HOWARD
CLANCY, RAY & FAYE	JACKSON, PATRICIA	OLIVIER, BOB & GLENDA	WILLOUGHBY, JACK
CLARK, ED	JOHNSTON, THANE & JEAN	ORTH, CATHERINE	WRIGHT, MILLARD & JUNE
CLARK, JUDY	JONES, THELMA	PAGE, STEVE & JOANNE	
CLARK, SHIRLEY	KAISER, WILHELMINA	PECK, GARY	
CLARK, STEVEN	KELSEY, VIVIAN	PHILLIPS, BRIAN	
CORNETT, MARY JANE	KENNEY, GLORIA	PILON, TELESFORE	
CORNISH, JOHN	KNOWLES, LLOYD & MADELINE	RATCLIFFE, WALTER & GEORGINA	
CRAIG, BRUCE & BETTY	KORPONAY, EILEEN	REID, DENNIS	
CRAWFORD, FLORENCE	KYES, BOB & DEBBY	REYNOLDS, HAZEL	
CROSS, THORALD & MARY	LACELLE, WILHELMINA	ROBERTSON, MARY REID	
deKROON, HENRY	LACKIE, BOB & KAYE	ROGERS, PATRICIA Q.	
DEMPSEY, CLARK & DONNA	LAMONT, RON & DIANE	ROMBOUGH, DOUG	
DESJARDINS, MELANIE	LANDON, BILL & IRIS	ROMBOUGH, JOAN	
DICKSON, GERI	LANDON, YVONNE	RONEY, GERALD	
DILLMAN, DUANE & CAROL	LANGTON, JIM & NANCY	RUNNING, MURRAY & DIANE	
DOAK, ROBERT	LAPOINTE, YOLANDE	SCHAEFFER, JOHN	
DONEVAN, LOUISE	LATIMER, ILA	SCHARF, RICHARD & MYRNA	
DOREY, GERRY & DONALDA	LINDSAY, ALAN & CAROLE	SHAVER, CAROL	
DOREY, MARK	LYNCH, ED & PATTI	SHAW, ART	
DOUGHTY, ERNIE & MARY	LYNCH, PETER & CAROL	SHEFFIELD, SHARYN	
EDGLEY, LAWRENCE	MABEE, KEITH	SHERREN, MONA	
EDWARDS, CAROL	MACKENZIE, WANDA	SHIELDS, JACQUILINE	
FOLEY, BOB	MACKINTOSH, DOUGLAS & BLU	SHIELDS, JOANNE	
FOLEY, BRUCE & JOAN	MACLEOD, JOHN & MARION	SHIRE, DAN	
FOLEY, DONNA	MALLORY, GLENNA	SIMPSON, DERROL	
FOSTER, DONALD	MALLORY, LINDA	SLY, KEITH	
FUNNELL, DORTHY	MATTHEW, DOUG & MARY ELLEN	SLY, SANDRA	
GEEKIE, NANCY	MCAULEY, DANIEL & DONNA	SMID, HENRY	

**CORPORATE
MEMBERS:**

BLACK CREEK BUILDING
 HORTON HOMESTEAD FARM
 LANSLOWNE AGRICULTURAL
 SOCIETY
 LANSLOWNE TELEPHONE/
 1000ISLAND.NET
 LIONS DEN HAIRSTYLING
 NEWELLS GARAGE
 RONEY ENGINEERING
 THOUSAND ISLAND RIVER
 HERITAGE SOCIETY
 TODD GRIER EXCAVATING