



THE THEME OF THIS NEWSLETTER IS TO HONOUR THE SCHOOLS OF THE PAST

Cover Photo - Braehead School - Courtesy Leeds and
Thousand Islands Archives.

First School Built in "Lansdowne Station" - 1872

CONTENTS

- | | |
|-----------------------------------------------|----------------------------------------------|
| 2 Then & Now | 11 Front of Leeds & Lansdowne Schools |
| 3 Lansdowne Fire | 12 Rear of Leeds & Lansdowne Schools |
| 4 Year in Review - 2014-2015 | 13 Front of Escott Schools |
| 6 The Beatty Diaries | 14 Tommy Stennitt - The Stenn Saw |
| 8 Lansdowne "Schools of the Past" Sign | 15 Membership Form |
| 9 Attending a One Room School | |



THEN & NOW - 1137 Prince Street, Lansdowne.

This house at the corner of Prince and Cliff Streets was built in 1874 by James MacDonald. He sold it and the carriage shop beside it to Samuel Consaul in 1882.

The last owners removed the porch and balcony to apply siding. They were not replaced.

Present owners, Mary Anne and Stark have not only replaced the porch and balcony, but expanded it. ***Congratulations on a well done restoration project!***



MEMBERSHIP FEES (Canadian Funds Please)

General (Family) - \$15.00 Association - \$20.00 Corporate - \$30.00

Our membership term is Sept. 1 to Aug. 31

Memberships available at any meeting or by cheque to:

LTI HISTORICAL SOCIETY Box 332 Lansdowne, Ont. K0E 1L0

NEWSLETTERS

As our newsletter binder was growing large, we have decided to split it into two.

Back copies of our newsletters are available for \$2.50 each

Copies 1 through 20 are now available in a three ring binder. Cost \$62.00

Copies 21 through 40 - Cost \$62.00 - Binders with all copies 1-43 are still available. Ask for price.

Due to the weight and high cost of postage, if these have to be mailed, postage will have to be added.

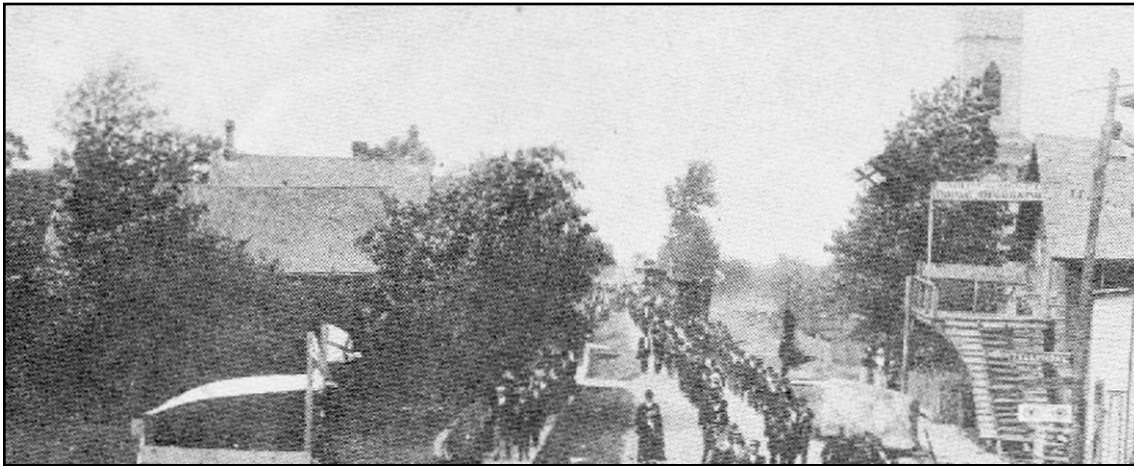
Also available now is a binder with a coloured cover insert or the coloured cover insert alone.

Ask the Executive for prices.



LANSDOWNE FIRE (Edna's Scrapbook - Edna B. Chant)

On July 22, 1915 a very bad fire in Lansdowne wiped out H. Leacock's blacksmith shop, Frank McNamee's carpenter shop and S. Snyder's paint shop. Water was taken from every well in the village, even cisterns were drained. Farmers drew water in barrels and cans, otherwise the whole town might have burned. The home of S. Consaul and the store of E.E. Johnston was scorched. Nothing was saved from the fire.



This building was destroyed in the fire. E.E. Johnston's hardware was the small white building at the right.

The scorched roof boards of Mr. Consaul's house still exist.



CONDOLENCES - March 9, 2016

It was with great sadness that we received the news of the passing of the former Major of Leeds and the 1000 Islands, Frank Kinsella. Frank gave freely of his energy and time to make a positive difference everywhere he lived; taking on public roles many times throughout his life. Always a mentor to others, Frank's great energy and ability to calmly confront life's challenges with a smile and a chuckle will be greatly missed in the community.

We extend our most sincere condolences to his family and many friends.

Heritage Organization Grant

The Historical Society made an application to the Provincial Ministry of Culture for a Heritage Organization Development Grant. Our application was approved, and we received \$1,545.00

This grant will be used to cover the cost of preparation and distribution of our Newsletters.

We wish to thank the Ministry of Culture for this assistance.



YEAR IN REVIEW 2014-2015

FROM THE SECRETARY'S ANNUAL REPORT

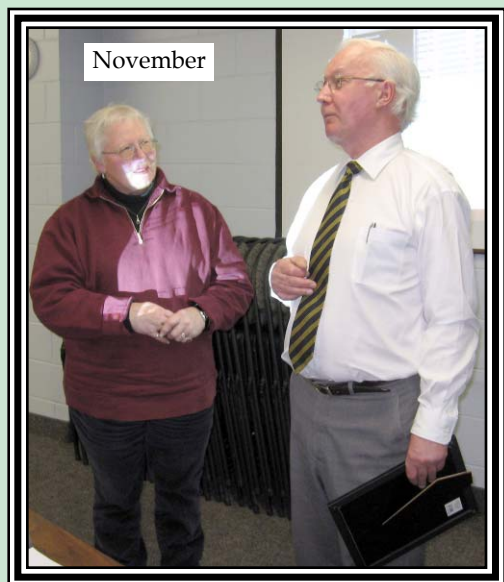


September 14, 2014 –
Jennifer DeBruin
brought Remembrances
of the Lost Villages
Photo by Bill Boulton

October 14, 2014 –
Amy Mackie outlined
Local Epidemics
of the Past
Photo by Bill Boulton



February 15, 2015 – Tyler Deschamps showed us Pressed
Glass from 1815 to 1910.
Photo by Bill Boulton



November 14, 2014 – Bill Beswetherick -
Voices of the Past - Letters from
Soldiers in WW1.
Photo by Bill Boulton



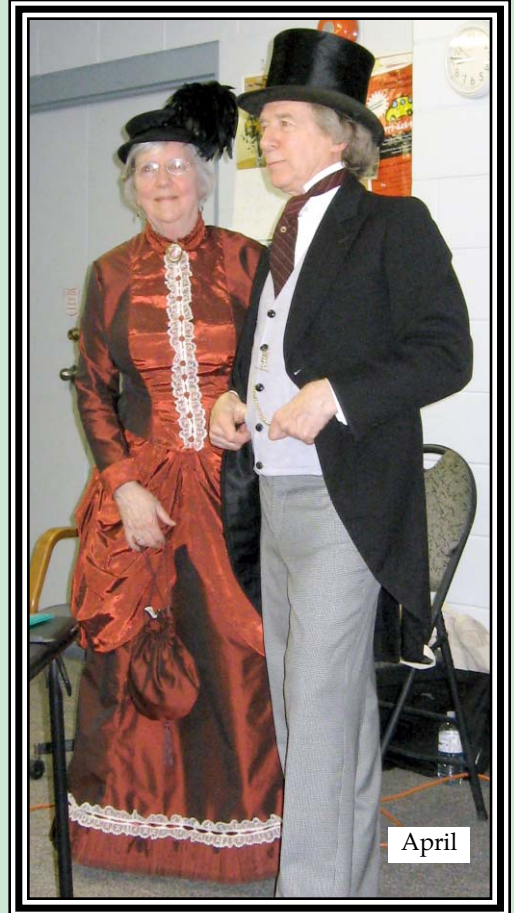
YEAR IN REVIEW 2014-2015

FROM THE SECRETARY'S ANNUAL REPORT

March



March 15, 2015 –
David and
Sandra Wells
brought us their
new book – The
Last Front.
Photo by Bill Boulton



April

July



July 19-24, 2014 –
Display at
Lansdowne Fair
from our Artifacts
and Lansdowne
Tel.
Photo by Bill Boulton

April 15, 2015 –
Brian and Renee
Porter visited to
help celebrate
Sir John's
100th birthday.
Photo by Bill Boulton

LTI Historical Society Executive 2015 – 2016

Past President
President
1st Vice President
Secretary
Treasurer

Freda White
Glennnda Olivier
Pierre Mercier
Janet Gaylord
Mary Robertson

Communications
Programme
Membership
Social

Public Relations

Open
Wilhelmina Lacelle
Connie Burns
Nancy Langton
Betty Bradley
Bill Boulton

Members at Large - Alan Lindsay, Gerald & Donalda Dorey, Jo-Anne Shields, Marion McKay



T H E B E A T T Y D I A R I E S

The Beatty family has now been on their Lansdowne land for about a year, living in an old house that was on the property. They are preparing to build a new house and move the barns up to that location. Diary material on the building of the house was covered in Newsletter #18, Fall/Winter 2002. These entries deal with other happenings in their lives.

- 1862 June 3** Ad ploughed north of house. George White, George Johnston and Humphry Young ploughed with him. Got a fine job done.
- 6 Humphry Young worked for three days ploughing.
- 7 We finished sowing. Sowed 30 bushel of oats, 11 of peas, 28 of wheat, 1 of barley and 1 large pailfull of flax seed.
- 8 Rev Mr. Gearden preached in the school house in the morning and Rev Mr. Carrol in the church in the afternoon .
- 18 Ad and Billy went to the old place for the sheep and a load of lumber.
- July 5** I went to funerals of Mrs. Shepard and John McDonald. They were buried at Robinson's.(Ebenezer).
- 6 Rev. Mr Smart preached in the school house. Very warm day.
- 12 Went to Brockville on the cars (train) in the morning to hear Rev. Mr. Wilson preach.
- 14 Came home on the 9 o'clock car. Worked on the road for 3 days.
- 17 Bought 200 pounds Indian Meal, 7 shillings per 100.
- 18 Boys went to mountain to pick berries. Got very few.
- Aug 25** Helped Hump Young at his harvest.
- Sept 12** Went to Gananoque and bought 100 of flour. Ben Young went with me.
- 14 Sowed grass seed on about 3 acres next field north of the first ditch.
- Oct 1** Drew stones off the field back of the house.
- 2 Went to Gananoque to Agricultural Show.
- 5 Ad went to Caintown with Ellen and Wal's wife.
- 6 Ad came home with load of lumber and other things.
- 10 Ploughed south of new house for the orchard next to the road.
- 14 Ad drew stones for the Grand Trunk four 1/2 days.
- 27 Snowed most of the night and this afternoon. Snow is a foot deep.
- Nov 10** Ad hunted for the sheep in forenoon.. Made a fence about the new house so as to keep the cattle from the garden.
- 18 Went to Brockville with the 3 o'clock train, got to Lyn at 6 o'clock, went to Wm. Clows and got \$400. from him. Got back to Lyn in time for the 9 train for Brockville. Met John Armstrong. Got forty-five dollars from him. Paid Mr. Sinclair \$400. on the mortgage and \$45 of interst. Came on the express to Mallorytown. Went and saw Tom Vandusen. He is to bring me \$30. next week. Got home on the 7 o'clock train. All well. Fine day.
- 20 Ellen was put to bed of a daughter about 10 o'clock. (Daughter Mary Jane. Married Dickson).
- 21 Ad ploughed in the afternoon . David went to Mallorytown and got a shirt and is to get a great coat from G. Tennenet. Fine day.
- 22 Drew in potatoes and beets to the new house cellar. I helped B. Young kill a cow.
- 23 The Rev. Mr. Carrol preached in the church. Little snow.
- 24 Ad helpd B. Young kill hogs.
- 25 Killed hogs. H. Young helped. Little snow.
- 28 Ad went to Mallorytown with David. He is going to Elgin to teach school.
- 29 Went to Gananoque. Bought 500 of flour. Paid 11 shillings, 6 pence. B. Young went with me.
- 30 Went to Young's School house (Rapid Valley) and heard Mr. Farres speak. *****



SAVE THE DATE: Thursday, October 20th, 2016

**You are invited to the Unveiling of the 1st Cultural/
Heritage Interpretive Sign in the village of Lansdowne**

"Our cultural sector is an enormous source of strength to the Canadian economy. Canadian stories, shaped by immense diversity, deserve to be celebrated and shared with the world." - Prime Minister of Canada.

What? You are invited to a public unveiling of the **First Cultural/Heritage Interpretive Sign** in the village of Lansdowne, Ontario

Where? At the **old Victoria School** (now Cross Country Garden Apartment),
12 Garden Street in Lansdowne.

When? Save this date for this cultural, heritage event!

Thursday, October 20th with a rain date of October 21st, 2-3 p.m.

This historical project is made possible by the Provincial Executive of the Retired Teachers of Ontario who awarded a \$4,000 grant for a 3 ft. by 4 ft. outdoor sign with the theme, **"Lansdowne Schools of the Past"**.

Further details will follow as the event gets closer.
Your attendance would mean a lot to us!

**Mrs. Wilhelmina Lacelle
Retired Teacher of Ontario
1-613-659-3836**

HELP US tell the stories of our "Schools of The Past"
including our 1 room schools Victoria School and
Lansdowne Public School.

We would really appreciate it if you would contact us ASAP regarding artifacts (photographs, maps, notebooks, textbooks, report cards, documents, play equipment, trophies, etc.) or write down your memories and send them to us!

Also, please spread the word about this project!

**Wilhelmina Lacelle
You may contact me by email: lacellew@1000island.net
Or call 613-659-3836**



“Lansdowne Schools of the Past” Sign Project

Some of you may be aware that I (Wilhelmina Lacelle) have received a \$4000.00 grant from the Retired Teachers of Ontario Provincial Grant: Services to Others. The funds will be used for a cultural/heritage interpretive sign titled “Lansdowne Schools of the Past”. Plans are for the installation of this sign in front of the old Victoria School early fall 2016.

The Lansdowne Schools of the Past sign will be installed on a 10'x16' concrete pad and a bench will be included at this rest stop to support the Historic Walking Tour of Lansdowne. Some of the many benefits of this project include: fostering more active lifestyles, building an inclusive and engaged community, and enriching people's lives through culture and heritage.

Similar interpretive signs can be seen at our Council Chamber here in Lansdowne, in Rockport as part of the walking tour, and in Lyndhurst, to name a few of the places in the Township where you will find Historical signs, plaques and markers. Inspiration for this signage project originally came from the Lansdowne Association for Revitalization (LAFR) and the First Impressions Community Exchange report. In this public document, it was suggested that we celebrate more of our rich culture and heritage in Lansdowne.

Although, much research has already been done, including: research at our Public Archives in Escott, meeting with some of our one room school teachers, reading books on education in the past and reviewing all of our Historical Newsletters: The design of the sign has only just started. It is important to note that the sign will include links to a website which will include much more information.

* DO YOU HAVE MATERIALS WHICH YOU WOULD BE WILLING TO LOAN TO US FOR PHOTOGRAPHING AND RESEARCH PURPOSES?

* DO YOU HAVE MATERIALS WHICH YOU WOULD LIKE TO DONATE TO THE ARCHIVES SO THAT THEY WILL BE PRESERVED FOR FUTURE GENERATIONS?

* WOULD YOU BE WILLING TO WRITE DOWN A MEMORY OR TWO ABOUT ATTENDING ONE OF OUR OLDER SCHOOLS?

Bill Boulton, author of “Village Streets & Country Lanes, Lansdowne Then & Now”, told me that there were about 20 one room schools at one point in our history. (See the list included). We are looking for pictures, stories and artifacts about each of these schools, as well as, Victoria School and Lansdowne District Public School.



Attending a One Room School by Alan Lindsay

When we moved to the country I attended Legge School on the Hiscocks Rd. Quite a change from Linklater! My teachers there were Anna Munro and Margaret Gray. I have many memories of my two years there. The school was always cold in the morning. Water was frozen in the pail. I don't think we had a caretaker. The teacher usually started the fire. Until noon we huddled around the stove to keep warm. By afternoon it was so hot we had to open the door. I can still smell the wool mittens getting too hot on the shield around the stove. The water supply for many years had come from a spring behind the school. After one of Bob Cunningham's children fell head first into the box around the spring and drowned a well was drilled next to the schoolhouse. One room schools usually had a woodshed. Originally the shed at Legge was attached to the front but had been moved around behind. Another task was to bring in enough wood for the day and to start the fire next morning. The outhouse was another great experience in the winter.

Didn't stay long. Most kids walked to school except the ones down at the river who somehow got a ride. The milk stand at the end of the Cunningham Rd was a great meeting place on the way home when the high school kids got off the bus. You also got a half day off

when someone in the community passed away.



Legge School
Photo from LTI Archives

Recess in the warm weather we played tag or baseball or red rover. At noon hour we headed to the swamp behind the school to skate or play hockey. Mostly we got our feet wet. The teacher would ring the bell on top of the school to call us back. Can you just imagine that happening today? Getting ready for the Christmas concert took most afternoons in the month of December. It was probably the biggest event of the year. On Arbour Day we would clean up the school and then take our lunches and go for a hike. The first year we went across the road to a woods on the Loney farm. Next year we went to the crystal mine at Marble Rock. Often on Friday afternoon we would have a Red Cross meeting.

(Continued on page #10)



(Continued from page #9)

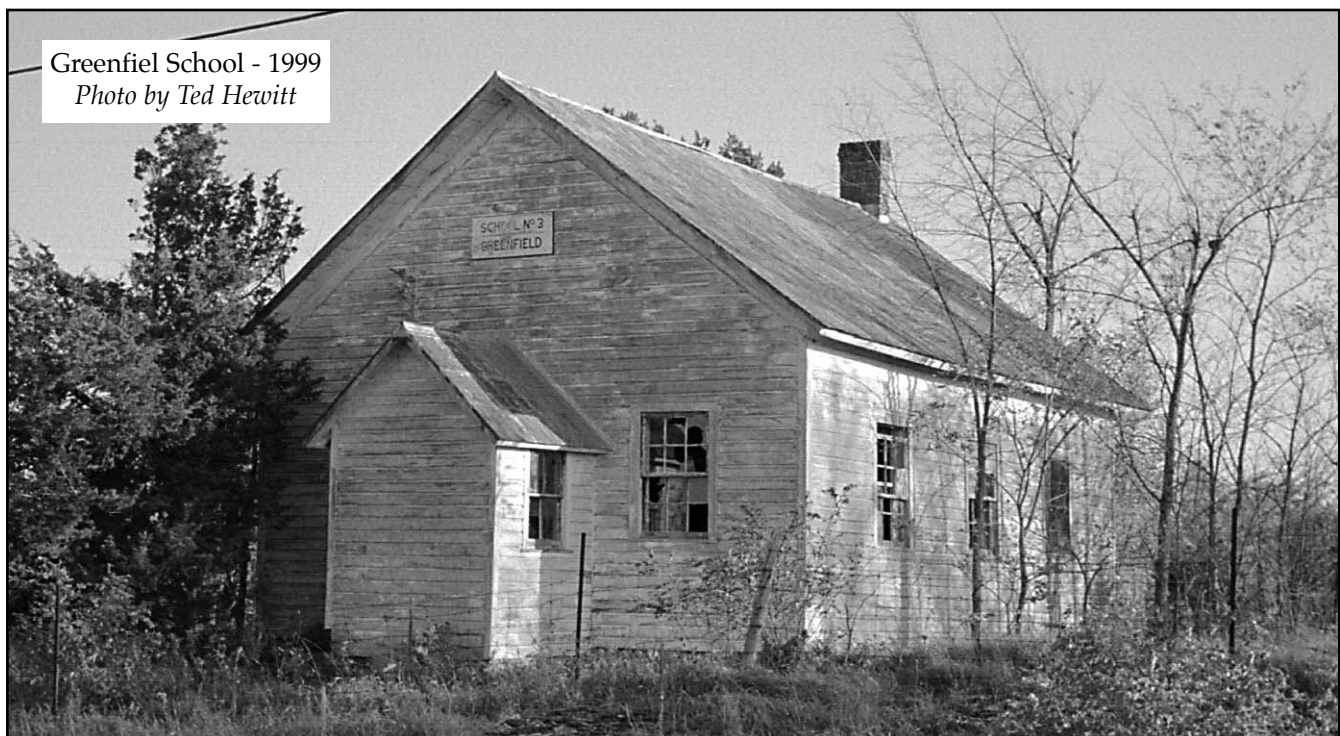
Attending a One Room School *by Alan Lindsay*

Every year the inspector would come and talk to each of us individually. I remember he wasn't too pleased with my handwriting. We were like a family all helping each other. The ones starting school often had a rough time at first getting used to coming to school. I remember helping the teacher carry one student in who sure didn't want to leave his father.

By this time Legge was starting to overflow with students. I was the only student in grade 8 so I went to Emery School near Marble Rock. Doreen DeWolfe was the teacher and since she went by my door I rode to school with her. There were three other grade 8 students there. We did a lot of the same things. We spent a lot of lunch hours in the rocky hills behind the school. In the winter we built a huge snow fort at least eight feet high. We took some planks from the porch for a roof and piled snow on top. Wouldn't be allowed now! Emery was a different school. It was smaller and seemed a lot brighter. I don't remember it being cold but I think we had a caretaker who started the fire early in the morning. We had practice teachers that year and we had lots of different learning experiences with them.

When I went to teachers' college I did what was called rural teaching at New Boyne with Dorothy Landon. I spent two weeks there. That was certainly a great experience and quite different from the city schools in Ottawa.

The one room experience is long gone but those of us who experienced it have great memories.



Greenfiel School - 1999
Photo by Ted Hewitt



Front of Leeds and Lansdowne Township Schools

S.S. #

- 1 Willowbank
 - 2 Sandhill
 - 3 Greenfield
 - 4 Legge
 - 5 Willstead
 - 6 Ebenezer
 - 7 Oakville
 - 8 Selton - (union school with Front of Escott)
 - 9 Lansdowne
 - 10 Maple Grove
 - 11 South Lake
 - 12 Emery
 - 13 Eden Grove
 - 14 Fairfax
 - 15 Rapid Valley
 - 16 Tilly - (union school with Front of Escott)
 - 17 Dulcemaine
 - 17 Taylor
 - 18 Sand Bay - (union school with Rear of Leeds and Lansdowne)
- Lansdowne Continuation
William Hiscocks
Lansdowne District / Thousand Islands Elementary School

Original by
H.A. May,
Enterprise,
Ontario.

Sand Bay
School
*Photo from
Society Files*





Rear of Leeds and Lansdowne Township Schools

S.S. #

- 1 Washburn
- 2 Soperton
- 3 Oak Leaf
- 4 Lyndhurst Public School
- 5 Long Point
- 6 Sweet's Corners
- 7 Browns
- 8 Seeley's Bay Public School
- 9 Briar Hill
- 10 Websters (union school with the Front of Yonge #15)
- 11 Woodvale
- 12 Berryton
- 13 Ellisville
- 14 Short Pint
- 15 Sand Bay (union school with Front of Leeds and Lansdowne)
- 16 Lakeview



Long Point School - Photo Courtesy Art Shaw



Front of Escott Township Schools **1830 - 1965**

S.S. #

- 12 Grenadier Island
- 13 Pooles Resort
- 14 Rockport
- 15 Selton (union school with Front of Leeds and Lansdowne)
- 16 Holland
- 17 Escott
- 18 Tilley (union school with Front of Leeds and Lansdowne)
- 19 Quabbin (union school with Front of Yonge)
- 20 Rockfield
- 21 Junetown (union school with Front of Yonge)
- 22 Mitchelville (union school with Front of Leeds and Lansdowne)



(Old)
Escott School
SS #17

*Photo from Leeds and the
Thousand Islands
Archives*

(New)
Escott Public School

*Photo from Leeds and the
Thousand Islands
Archives*





Junetown School
SS #21

*Photo from Leeds and the
Thousand Islands
Archives*

Holland School
SS #16

*Photo from Leeds and the
Thousand Islands
Archives*



TOMMY STENNITT - INVENTOR OF THE STENN SAW

TOM STENNITT A RESIDENT OF SAND BAY GREW UP CUTTING WOOD. HIS BROTHER AND HIM CUT HUNDREDS OF CORDS OF WOOD WITH A CROSSCUT SAW. HE SPENT HIS LIFE CUTTING WOOD. AT THE AGE OF SIX OR SEVEN HIS FATHER STARTED TEACHING HIM UNDER STERN GUIDANCE.

AS AN ADULT HE PROVIDED A WOOD CUTTING SERVICE FOR HIS NEIGHBOURS. BELIEVING THAT THERE HAD TO BE A BETTER WAY THAN THE CROSSCUT SAW, HE INVENTED THE STENN SAW IN 1933 AND LATER IN THE 1940'S A PORTABLE WOOD SPLITTER. ANY MACHINERY TO DO THE JOB PRIOR TO THIS WAS HEAVY AND THE TREES HAD TO BE HAULED OUT OF THE WOODS TO THE MACHINES. THE STENN SAW WAS PORTABLE.

IN BUILDING IT HE USED A SMALL, USED 6.8 KGM., ONE AND A HALF HORSEPOWER ENGINE THAT HE PURCHASED FOR \$10.00 FROM A NEIGHBOUR BOY, AND HE USED WOOD FROM AN OLD SILO THAT WAS ON HIS FARM. THE SAW WEIGHED ABOUT 45 POUNDS (20 KGMS.) AND COULD EASILY BE CARRIED.

AFTER A FEW YEARS OF USING IT AND MODIFYING IT HE HAD IT PATENTED, BUT ONLY A FEW SAWS WERE EVER PRODUCED. HE WAS ABLE TO CUT WOOD ALL OVER THE COUNTRY - 15 TO 20 CORD A DAY. IT WAS CAPABLE OF CUTTING 8 CORD AN HOUR.

☆☆☆☆☆☆



THE STENN SAW



MEMBERSHIP FORM - Leeds & 1000 Islands Historical Society

NAME: _____

MAILING ADDRESS: _____

PHONE #: _____

E-MAIL: _____

PLEASE INDICATE: New Membership _____ Renewal Membership _____

TYPE OF MEMBERSHIP REQUIRED:

GENERAL - \$15.00 ASSOCIATION - \$15.00 CORPORATE - \$30.00

I Wish to Receive the "Full Colour Newsletter" - by e-mail only _____

I Wish to Receive the "Black & White Printed Newsletter" _____

I give permission to publish my name in the Newsletter, realizing that the Newsletter will be published on the LTI Historical Society Web Site:: YES NO

**Mail this form along with your payment to:
LTI Historical Society, P.O. Box 332, Lansdowne, On. K0E 1L0
or submit it to a monthly meeting of the LTI Historical Society.
Your Support is Appreciated - Thank You.**



Paid up MEMBERSHIPS as of APRIL 1, 2016

LAST NAME FIRST NAME	LAST NAME FIRST NAME	LAST NAME FIRST NAME	LAST NAME FIRST NAME
AALDERS, WINNIE	GRIER, JAMIE & TRACIE	RIDEOUT, WES & KAREN	<u>CORPORATE</u> <u>MEMBERS:</u>
ABRAMS, GAIL	GRIER, ROSS & IRENE	RITTENHOUSE, LARRY	
ADAMS, WINSTON & WILMA	HAFFIE, JOHN & DOREEN	ROANTREE, DAN	GLENNDA OLIVIER
ARROWSMITH, BRENDA	HAFFIE, LARRY	ROBERTSON, MARY REID	REMAX RIVERVIEW
BARR, DAVID & PENNY	HAIG, HAROLD	ROGERS, CAROL	REAL ESTATE
BELL, HOWARD & EMILY	HALL, MYRTLE	ROGERS, PATRICIA Q.	
BICKERTON, DOUG & ANN	HEWITT, TED & PAT	ROMBOUGH, JOAN	
BOULTON, WM.	HUNT, DOREEN	RONEY, GERALD	
BRADLEY, BETTY	HUNT, MORLEY & ANNE	RUNNING, MURRAY, & DIANE	
BROWN, DEBORAH	HUSKINSON, BRIAN	SHARE, RICHARD & MYRNA	LANSDOWNE
BROWN, HILARY	JACKSON, PATRICIA	SHAVER, CAROL	AGRICULTURAL SOCIETY
BROWN, JACK	JOHNSTON, JEAN	SHAW, ART	
BURNS, DON & PAT	JONES, THELMA	SHERREN, MONA	LANSDOWNE
BURNS, GEORGE & CONNIE	KAISER, WILHELMINA	SHIELDS, JACQUELINE	TELEPHONE/
BURNS, JOAN	KELSEY, VIVIAN	SHIELDS, WAYNE & JO-ANNE	1000ISLAND.NET
BURNS, KEITH	KNOWLES, LLOYD & MADELINE	SHIRE, DAN	
BURNS, TOM	KYES, BOB & DEBBY	SIMPSON, DERROL	LIONS DEN HAIR
BURTCH, KATHLEEN	LACKIE, BOB & KAYE	SLY, KEITH	STYLING
CAVE, SUNNY & NELSON	LAMONT, RON & DIANE	SORENSEN, JOHN & LOUISE	
CHISAMORE, DON & DANNY	LANDON, BILL & IRIS	STEACY, MARLENE	NEWELLS GARAGE
CLANCY, RAY & FAYE	LANGTON, JIM & NANCY	STRUTHERS, VELMA	
CLARK, ED	LAPOINTE, YOLANDE	SULLIVAN, SUSAN	RONNEY ENGINEERING
CLARK, SHIRLEY	LATIMER, ILA	SWAN, MARION	
CORNETT, MARY JANE	LINDSAY, ALAN & CAROLE	TEDFORD, ROBERT	TODD GRIER
CORNISH, JOHN	LYNCH, PETER & CAROL	TEDFORD, ROGER & CONNIE	EXCAVATING
CRAIG, BRUCE & BETTY	MABEE, KEITH	TRUEDELL, ERIC & JACKIE	
CROSS, THORALD & MARY	MACKENZIE, WANDA	TURNER, DOUGLAS	TOWNSHIP OF LEEDS
deKROON, HENRY	MACKINTOSH, DOUGLAS & BLU	WARREN, GEORGE & BETTE	AND THOUSAND
DEMPSEY, CLARK & DONNA	MALLORY, GLENNA	WARREN, GLENN & TRUDY	ISLANDS
DESJARDINS, MELANIE	MALLORY, LINDA	WEBSTER, DAWN	
DILLMAN, DUANE & CAROL	MANGAN, JESSE; ORR, BLAKE	WEBSTER, GEORGE & REBECCA	
DOAK, ROBERT	MATTHEW, DOUG & MARY ELLEN	WEBSTER, JEAN	
DONEVAN, LOUISE	MCAULEY, DANIEL & DONNA	WEBSTER, KAY	
DOREY, GERRY & DONALDA	McCONNELL, SUE	WHITE, FRED A	
DOREY, MARK	McCRADY, EARL	WHITE, LARRY & CHERYL	
DOUGHTY, ERNIE & MARY	McCREADY, BRUCE & MAXINE	WILLIAMS, HOWARD	
EDGLEY, LAWRENCE	McKAY, MARION		
EDWARDS, CAROL	MERCIER, PIERRE		
FERGUSON, ELEANOR	MOIR, RONALD		
FOLEY, BRUCE & JOAN	MONTGOMERY, CHARLES		
FOLEY, DONNA	MONTGOMERY, LEON		
GEMMELL, JOHN	MOORHEAD, LORNE & MARGARET		
GIBBINS, BOB	MURRAY, PETER		
GIBBINS, CHRIS & GINNY	NALON, JOHN & BARBARA		
GIBSON-LANGILLE, SHIRLEY	NUTTALL, BEN & HILDA		
GILBERT, DOUG & JUNE	NUTTALL, JAY		
GILL, JULIA	NUTTALL, LINDA & CHOJNACKI, MARK		
GOFF, DOROTHY	O'CONNOR, MICHAEL		
GRAHAM, ANDREW & KATHERINE	OFFORD, HOSS & SANDI		
GRAY, CHARLES & ANN	O'GRADY, CHRIS		
GREBBY, JOHN & MARIE	PECK, GARY		

HONOURARY
LIFE
MEMBERSHIP

AUDREY NEWELL

VISIT OUR WEBSITE AT www.ltihistoricalsociety.org