



Leeds & the 1000 Islands Historical Society

Number 55

Fall/Winter 2023

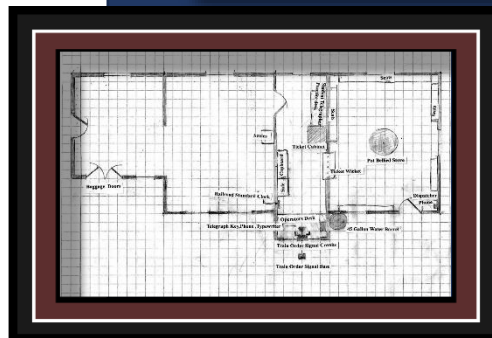
\$5.00

in this issue...

**Railway Historical Sign
Unveiled**
page 9



**Inside Lansdowne
Railway Station**
page 10



Railway Jargon
page 13



**Heritage Signage
in the Township**
page 16



Newsletter of the LTI Historical Society, P. O. Box 332, Lansdowne, Ontario, K0E 1R0
www.ltihistoricalsociety.org admin@lthistoricalsociety.org

"to promote, preserve, and share our past"

President's Message

The Leeds and 1000 Islands Historical Society Needs You

"History is instructive. What it suggests to people is that even if they do little things ... Anything they do, however small, becomes part of a much larger sort of flow of energy. And when enough people do enough things, however small they are, then change takes place." H. Zinn

The LTI Historical Society is very excited to once again be able to gather publicly and enjoy live presentations and demonstrations! The lineup of programs this year is phenomenal!

However, after two years of very restricted programming due to Covid, many of us forgot to renew our memberships. So, the little thing that you could do to enable

us to continue to preserve our local history is to renew your membership.

Encourage your friends and neighbours to join the LTI Historical Society. We welcome new members regularly and would love to have you join us if you are not already a member.

A membership form is included in this newsletter and may also be found on the website:

www.ltihistoricalsociety.org

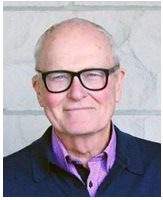
In return for your membership, you will receive regular newsletters, invitations to 5 public meetings per year and special events. The funds from your membership fees also help support the Leeds and 1000 Islands Archives.

Come and join the fun of preserving our heritage!

Glenda Olivier

"to promote, preserve and share our past"

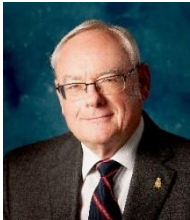
Condolences



Andrew (Andy) Graham

His obituary can be viewed at:

<https://barclayfuneralhome.com/tribute/details/3545/Andrew-Graham/obituary.html>



Gord Ohlke,

Township Councillor and Deputy Mayor

<https://www.kingstonist.com/news/leeds-and-the-thousand-islands-remembers-gordon-ohlke/>



Marlene Steacy

<https://barclayfuneralhome.com/tribute/details/3868/Marlene-Steacy/obituary.html>



Joan Rombough

<https://thewhig.remembering.ca/obituary/joanrombough-1084717142>



Henry Smid

<https://www.judsonfuneralhome.ca/obituaries/Hendrik-Henry-Smid?obId=28647751>



Eric and Nancy Webster

<https://barclayfuneralhome.com/tribute/details/3115/EricWebster/obituary.html>

<https://barclayfuneralhome.com/tribute/details/3849/Nancy-Webster/obituary.html>



Charles Montgomery

<https://gananoquereporter.remembering.ca/obituary/charles-montgomery-1086008407>



Howard Williams

<https://barclayfuneralhome.com/tribute/details/3757/Howard-Williams/obituary.html>

Membership Information

It's time to renew your membership! The cost of membership will be rising, modestly, next September to \$20.00. If you wish to renew beforehand, simply go to our website <https://ltihistoricalsociety.org/membership.php>

and fill out and submit the provided form. Payment is made by e-transfer, following the provided directions or by posting a cheque to LTI Historical Society, P.O. Box 332 Lansdowne, Ontario K0E 1L0.

Be sure to remind your friends of this great organization and encourage them to give us a try.

Past Newsletters can be viewed at:

<https://ltihistoricalsociety.org/newsletters.php>

They are available for purchase by following the instructions at this page.

Support

Recognition - Heritage Organization Development Grant

Once again, the Historical Society was the recipient of the 2020-2021 Heritage Organization Development Grant.

This grant will be used to cover the cost of preparation and distribution of our Newsletters. The Society thanks the government of Ontario for its continued generous support.

News & Upcoming Events

Craft Fair

The TLTI Historical Society Christmas Craft Fair held Saturday October 28th 2023 was a huge success due in no small part to the support and hard work of our wonderful volunteers and amazing vendors this year.

We are so thankful to the community for their support in our fundraising efforts each year so that we can support local projects and local community groups in our communities in turn.

Just past



Historical Society presents

Festive Arrangement
A step-by-step
No experience needed
Fundraising paint party
Led by Dawne Fiegen

Sunday November 26, 2023
1—3/4 pm

United Church, 25 Miller St.
Lansdowne
45.00 per person

To reserve your seat/ e-transfer
payment please email:
historicalsoc@1000island.net
Bring your own refreshments

- Sunday Feb. 4th we will be doing a Stained-glass fundraising workshop with Heather White.
- There will be a Gardening Fundraising Workshop March with Berry H Farms
- And 3 other events April, May and June

Relocation of Historical Society Artifacts

With the generous cooperation of the Township, the Society was able to rehouse a considerable part of its artifact collection in to Springfield House where it is anticipated they will be displayed upon completion of the renovation of Springfield House.

Archives News

The Leeds and the Thousand Islands Archives acquires, preserves, promotes and makes available the historical record of the Township of Leeds and the Thousand Islands. Our collections include letters, diaries, municipal documents, maps, drawings, postcards, and photographs. We have received many wonderful donations including the Alan Lindsay Papers, the Bill Boulton Papers and Webster Family research from the Estate of David N. Webster.

The Archives are temporarily located at 1365 County Road 2 in a trailer generously and with great *foresight* provided by the Township until they can be returned to the Escott Town Hall and Springfield House which are going through extensive restoration.

The Archives can be reached through our website which doubles as our catalogue and source for contact information at <https://ltiarchives.ca/> .

The next edition of the Newsletter will be about the Lansdowne Fair.



Recent Presentations:

Art Shaw: Early Chairs & Chairmakers of Leeds County,

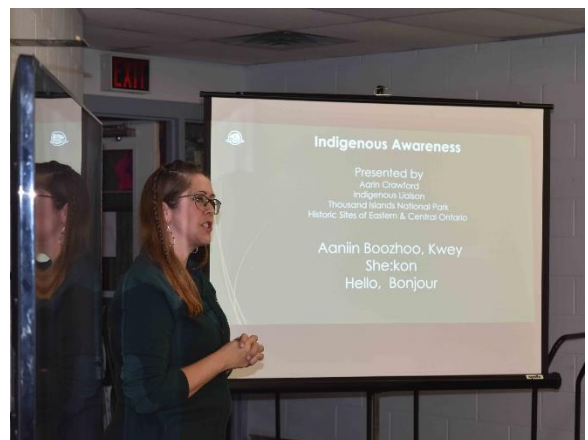
October 16 meeting of the Historical Society.



Graeme Roy, Vice President of the Railway Museum of Eastern Ontario, presented to a large and attentive audience at the September 18 meeting of the Historical Society.



Aarin Crawford, Indigenous Liason **Thousand Islands National Park** **Historic Sites of Eastern & Central Ontario** **Indigenous Awareness,** **November 20**



Future Presentations

Mon. March 18, 2024 @ 7:30pm

**"History of Canadian Rug
Hooking"**

**May, 2024 Saturday Field Trip
to Tackaberry Museum, Athens**

Mon. April 5, 2024 @ 7:30pm

**Robert Burtch - "History of
Willowbank Cemetery"**

Fall, 2024 - To be confirmed.

**Field Trip to previous Escott
School Host – Linda Cyr**

Executive Officers

President: Glennda Olivier
Past President: Pierrre Mercier
Vice-President: Pierre Mercier (INTERIM)
Secretary: Wihelmina Lacelle
Treasurer: Connie Burns

Committee Chairs

Advertising: Donna Dempsey
Archives: Donnie Dorey
Fund Raising: Cheryl Handa Peters
Membership: Robert Burtch
Municipal Heritage Committee: James Saynor
Newsletter: Pierre Mercier
Program: Janet Gaylord
Social: Betty Bradley
Webmaster: James Saynor

Members at Large

Chris Gibbins
Freda White
Guy Laroque
Marcus Letourneau
Mary Robertson

How can you say no to Bill Boulton?

Wilhelmina Lacelle Secretary
LTI Historical Society



Bill, our local historian and author, was a tremendous help to me while I researched material for the outdoor Lansdowne Schools of the Past interpretive sign.

So, I didn't say no when he asked me about 5 years ago to research the importance of the railway on the village of Lansdowne. I began with a detailed railway timeline.

Why did it take so long? One lead led to another, led to another. Then the pandemic. Lockdowns. Illness. Weather.

It was Bill who referred me to his friend and railway enthusiast, William Radford. This contact led me to five other railway enthusiasts. Whenever I asked a question, they did the deep research and were delighted to assist. I am also most thankful for the material housed in the Public Archives in Escott.

I worked closely with Brian Phillips who is renowned for designing many outdoor interpretive signs in our Township. Brian encouraged me by asking many questions to ensure that my information was historically correct.

It took many, many hours to complete this worthy project and I was pleased to finally arrange an unveiling ceremony on June 3, 2023 at Grand Trunk Ave. in Lansdowne.

The Unveiling of the Railway Historical Sign

by: Newsletter staff



Bill Boulton with fellow railway enthusiasts, left to right James Clark, William Radford, Reverend Greg Blatch, at the unveiling.

On an appropriately beautiful sunny Spring day, June 3, a significant throng gathered on Grand Trunk Ave. Lansdowne. The occasion was the unveiling of the long-awaited Railway Interpretive Sign. A tremendous amount of research drawing on resources from many contributors in our community and beyond fed into the design process described elsewhere in this publication by the talented and hardworking Brian Phillips.



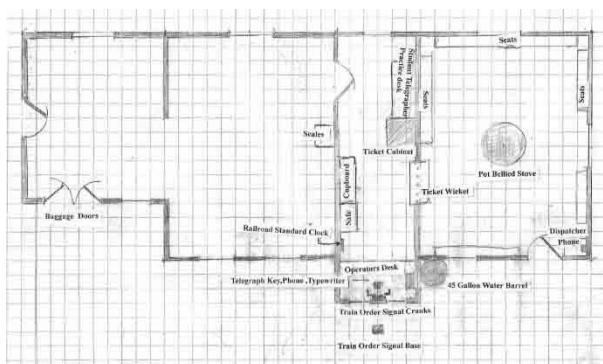
The Mayor Corinna Smith-Gatcke and LTISHS President Glenda Olivier



Bill receiving well deserved congratulations from MP Michael Barret.

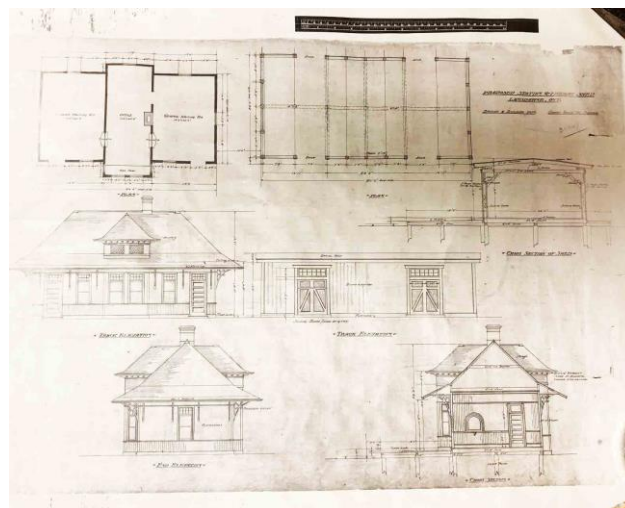
Inside the Lansdowne Railway Station

With contributions from
Graeme Roy and the late
Ray Clancy and



Scale drawing of the floor plan of the Lansdowne Railway Station rendered by Ray Clancy

The small telegraph office reflects the fact that, at some point, the building was staffed by a single Agent/Telegraph Operator and was open only 8:30 am to 4:30 pm except Sunday. (P.18 in the 1940 timetable). The amount of telegraph, express and passenger traffic would be considerably less than, say, Prescott or Cardinal. Terminals such as Belleville and Brockville were open 24 hrs a day.



Scale drawings of the station



Telegraph Operator desk, similar to Lansdowne



Another interior similar to Lansdowne's

Each GTR/CNR station had its own particular features with very few being alike



Yarker Station



Westport Station



Prescott Station



Cardinal Station



Smiths Falls

Passenger service to small stations between Toronto and Montreal ended on Oct.30, 1966. Stations like Lansdowne were among the first to be closed and razed. I do recall visiting the station in the Summer of 1966 with my Father who was CNR telegrapher at Cardinal. The young operator on duty may have been collecting and organizing station records that would be sent to Montreal prior to the closing of the station later that year. My Dad was providing him with assistance. Telegraph instruments were already removed and the duties of the operator on duty did not even involve reporting train movements. His tasks were reduced to that of a quasi-caretaker.

Compare the exterior of Mallorytown to that of Lansdowne....close geographically, but what were the differences, if any?



Railway Jargon

By Audrey Newell
Honourary Lifetime Member

Big hole - emergency braking procedure - "Hold on, we're going into the big hole."

Bull - railway security officer, "Hoboes were always on the lookout for bulls."

Bustitution - replacement of trains with buses "We'll have to stop here and bustitute."

Yard goat - locomotives used to move cars from one track to another

Highball - train can proceed at a brisk pace

Crummy - crew quarters on a freight train

Deadhead - off duty railroad employee travelling free of charge

Foamer - railroad buff - (into R.R. trivia)

Gandy dancer - track maintenance worker

Gauge - distance between the rails, standard gauge based on space between chariot wheel ruts on Roman roads

Hogger- locomotive engineer

Hot box - overheated wheel bearing

Hump - artificial hill in a rail yard

Slow order - reduce speed

Wigwag- crossing signal

Jitney- hand car pumped by two maintenance workers



Thought to be migrant farm workers hitching a ride to the West

The Derailment made Headline News...

Ottawa Citizen Monday 26
February 1962

Brockville. Derailment Damages CNR Station

The railway station at Lansdowne was heavily damaged by a freight-car derailment that blocked the CNR's main line Saturday (sic) morning.

Lansdowne is about 20 miles southwest of Brockville.

Thirty cars of an 84-car eastbound freight train left the tracks, tearing up 300 yards of roadbed and crashing into the station building. Damage to the station was estimated at \$35,000.

Work crews started a clean up at noon Sunday, and expected to restore service on the line which connects Toronto and Montreal this afternoon. In the meantime, both CNR and CPR traffic were rerouted through Smiths Falls.

Passengers for Brockville, Prescott and other river front points completed their trips by bus.



Ottawa Journal Monday 26
February 1962

CN Freight Derailed Near Brockville

BROCKVILLE (Special) A CNR freight train westbound on the main CN line and about 30 cars were derailed Sunday morning at 6.15 in the village of Lansdowne 22 miles west of here. No one was injured.

The accident occurred directly in front of the Lansdowne Station. One car flew into the west side of the station causing considerable damage.

The people of Lansdowne used to trains were not rudely awakened by the crash. One woman described it as

sounding like a snowplow hitting a culvert.

Several cars completely leveled two buildings owned by William McConnell, a construction supplier and lumberman.

The buildings contained about 50 tons of coal, a large quantity of lumber, bags of cement and \$2,000 of roofing shingles. It is not known how much can be salvaged.

Mrs. William McConnell said a derailment happened in 1946 at the same spot leveling two buildings. The station was not damaged on that occasion.

The main road leading into the village was blocked for several hours. However, residents were able to cross the main CNR line by a village road just east of the station.

Mrs. McConnell said the "buildings have just gone." She said damage may reach \$70,000.

First person on the scene was John Haffie who heard crash as he was preparing to go to work. He roused neighbors behind the station to assist possibly injured.

Also on the scene was Ernie Moorehead who notified the McConnells and those adjacent to the accident.

R. A. Wilson, in charge of wrecking operations, said the cause of the derailment had not been determined. Most likely cause is thought to be a hot bearing box.

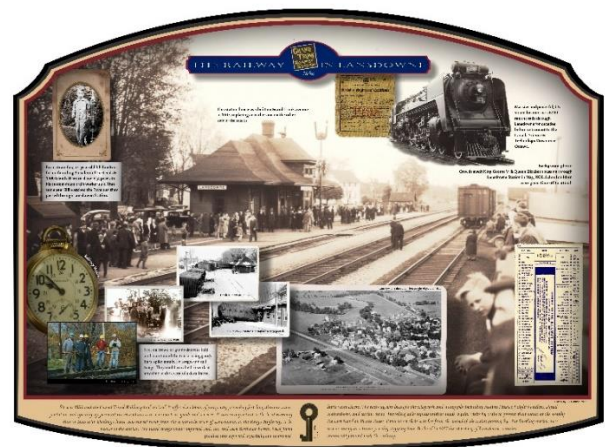
Wrecking hooks from Montreal and Belleville started to clear the track at 10 a.m. Sunday. One track on the line was open at 10 p.m.

Freight officials in Brockville said the westbound track has been cleared but were unable to say how long it would take to repair the badly damaged eastbound track. Meanwhile, both east and westbound traffic is being run on the one track, they said.

Source:

<https://churher.crcml.org/circle/Wreck%20Details/1962Lansdowne.html>

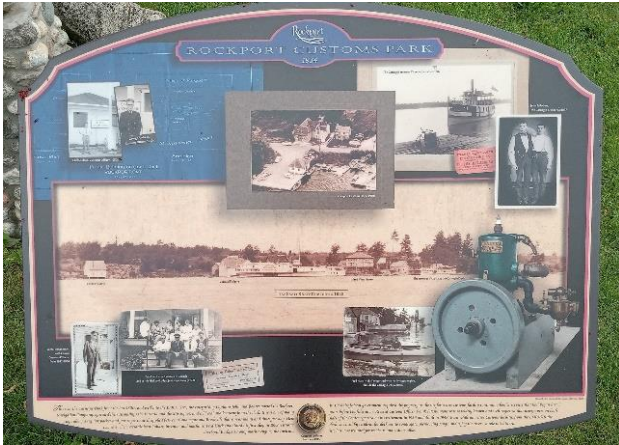
We hope to interview Ernie Moorhead, the first on the scene of the derailment, in the near future. Are there any questions you want us to ask him regarding his impressions of that day?



The Society's webpage has a zoomable readable image!

Heritage Signage in the Township

by James Saynor



The many interpretive and commemorative signs placed over the years in our township by various groups are not simply for tourists to stumble over; instead they are significant representations of our local cultural history. A first attempt at a comprehensive list, these will be plotted on an on-line map in the near future and made available through the Historical Society website.

The number 1 refers to photographic signs, 2 refers to maroon metallic signs (usually federal government), 3 refers brown metallic signs, 4 refers to blue metallic (usually provincial), and 5 refers to photographic and painted murals.

Here arranged geographically...

Rear of Leeds & Lansdowne

1 Seeley's Bay: A Warm Welcome, A History of Seeley's Bay, A War Time Loss, Commercial Hub; Lyndhurst: Furnace Falls, Carding Mill & Fairgrounds

2 Leeds Baptist Chapel & Burial Ground,

Lyndhurst: Lansdowne Iron Works

4 Lyndhurst: Lyndhurst Bridge, Founding of Lyndhurst; John Bracken

Front of Leeds & Lansdowne

1 Marble Rock, The Outlet, Lansdowne: Schools of the Past, Lansdowne Rural Telephone Co., Lansdowne Railroad; Landon Bay: Kay's Bridge

3 Union Church

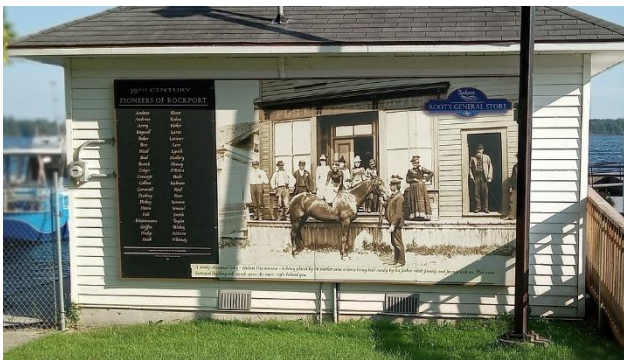
4 Lansdowne: WP Earle Store, Dr. E. Beatty House; Thousand Islands International Bridge

5 Lansdowne: GTR: Lansdowne Station, Village Views [Freshmart]

Front of Escott

1 Blue Mountain, Thousand Islands Bridge System, Rockport: A River Community, Andress Boat Works, Cheese Factory, Church of the Redeemer, Cornwall's, Customs Park, Hickory Lodge, Invictus Marine Engine, Island View, Schoolhouse, Seaman House, St. Brendan's RC Church; LaRue Mills

3 Springfield House
 4 Escott Township Hall
 5 Rockport: Andress Boatworks,
 Boatworks & UNESCO Designated,
 Dressed in our Sunday Best, Ferry to
 Alexandria Bay, N.Y., Roots General
 Store



In addition to these, there are 17 Designated properties on the Heritage Register likely identified by signs, but not all publicly accessible. These will be itemized at a later date.

Editor's comment

The township's Municipal Heritage Properties Register also includes 81 properties with "listed" cultural heritage status which, because of recent changes in Ontario government legislation, will be dropped from the Register unless they receive "designated" status within two years. As the Register is an important part of

our historical record, only recently made public, the LTI Historical Society will create a similar and improved inventory so that this information is not lost.

Only properties on the Register are entitled to apply for the township's very successful Heritage Conservation and Celebration Grant, details of which can be seen at <https://www.leeds1000islands.ca/en/governing/Grants-and-Funding.aspx>

See the Register at <https://www.leeds1000islands.ca/en/playing/heritage-and-culture.aspx>



Typical Designation Placard

If you are aware of something not listed we'd appreciate a picture [with location] sent to admin@lthistoricalsociety.org

Members as of November 2023.....

Anderson, Wayne
 Antoine, Kathi
 Arrowsmith, Brenda
 Baldock, Dan
 Bickerton, Doug
 Bouillon, Mary
 Bradley, Betty
 Burns, George & Connie
 Burtch, Kathleen
 Burtch, Robert
 Cave, Nelson
 Chojnacki, Mark
 Clark, Shirley
 Cornett, Mary Joan
 Cullen, Sandra
 Cunningham, Chris
 Cyr, Linda
 Daigle, Betty Lee-
 Dempsey, Donna & Clark
 Dorey, Cheri
 Dorey, Donald & Gerry
 Elliott, Robert
 Foley, Donna
 Gaylord, Janet & Dan
 Gemmell, John
 Gibbins, Bob
 Gibbins, Chris & Ginny
 Gibson-Langille, Shirley
 Goddard, Elizabeth
 Graczol, Margaret
 Grebby, John & Marie
 Hawkins, Tim
 Heddon, Amy
 Hewitt, Nattanya
 Kaiser, Margaret
 Lacelle, Wilhelmina
 LaPointe, Yolande
 Larocque, Guy
 Letourneau, Marcus
 MacLeod, John & Marion
 Macklem, Katherine
 Mallory, Glenna

Mallory, Linda
 Matthew, Mary Ellen & Doug
 McDonald, Bair
 Mercier, Pierre
 Merkley, Wendy
 Miller, Margot
 Moran, Terry
 Mullen, Andy & Toni
 Nash, Christine
 Nuttall, Linda
 O'Connor, Michael
 O'Grady, Chris
 Olivier, Bob & Glenda
 Olivier/Wells, Donna & Steve
 Peck, Gary
 Petrie, Kathy
 Phillips, Brian
 Robertson, Mary Reid
 Rogers, Patricia Q.
 Saynor, James & Ellen Fibison
 Schijns, Marlene
 Shaw, Art
 Steacy, Marlene
 Thorburn, Jon
 Veenstra, Tracey
 Webster, Beatrice
 Webster, Rebecca
 Webster, Jean
 Wells, Dave & Sandra
 Yung, Caroline

Corporate Members

FoxRun By the River Retirement Home
 Lucky Dollar

Honourary Lifetime Members

William "Bill" Boulton
 Ted & Pat Hewitt
 Alan Lindsay
 Audrey Newell
 Freda White

Apologies in advance: for typos, misspellings, or for missing a paid-up member. Please alert Robert Burtch so that we may update.