



Leeds & the 1000 Islands Historical Society

Number 56

Fall / Winter 2024

\$5.00

in this issue

At the Fair pg 3

Lansdowne Fair – 150 Years pg 4

160th Lansdowne Fair pg 6

Homecrafts pg 7

Wm Beatty Diaries – Fair Related pg 10

Evolving Role - Junior Fair Board pg 12

Condolences pg 14, 15

Then & Now – Ivy Lea pg 15

2024 Presentations & Events pg 16



Newsletter of the LTI Historical Society, P.O. Box 332, Lansdowne, Ontario K0E 1L0

www.ltihistoricalsociety.org

admin@lthistoricalsociety.org

"to promote, preserve, and share our past"



Let's Celebrate 30 Years of Incorporation as a Historical Society!

Did you know that the Leeds and 1000 Islands Historical Society (formerly the Front of Leeds and Lansdowne Historical Society) was initiated in 1992. It took some time to become official and to become incorporated [1994], but now 30 years have passed and plans are underway for a big celebration in the Spring. If you have any memorabilia or pictures, etc., from the early years of the Historical Society, please contact the committee face-to-face or at: info@lthistoricalsociety.org

In other news, this is my last message as President of the Leeds and 1000 Islands Historical Society. Many thanks for all the support that has been given over the years as I have endeavoured to lead this wonderful group. It is with great confidence and excitement that I announce that Wilhelmina Lacelle is our new President. While I remain on the Executive to continue to support the Society, I look forward to a little more leisure time.

The new Executive is shown here in this newsletter, as well as on our website <https://lthistoricalsociety.org> Spring Presentations will be announced there soon.

Glenda

Executive for 2024 - 2025

Executive Officers

President: Wilhelmina Lacelle
 Past President: Glenda Olivier
 Vice-President: Pierre Mercier (INTERIM)
 Secretary: James Saynor
 Treasurer: Connie Burns, Glenda Olivier

Members at Large

Chris Gibbins
 Guy Laroque
 Mary Robertson

Committee Chairs

Advertising: Donna Dempsey
 Archives: Donnie Dorey
 Fundraising: Glenda Olivier, Cheryl Handa-Peters
 Membership: Robert Burtch
 Municipal Heritage Committee: James Saynor
 Newsletter: James Saynor, Pierre Mercier
 Program: Janet Gaylord
 Social: Betty Bradley
 Website: James Saynor

Thanks to outgoing: Marcus Letourneau

Cover Photo: 2012 Lansdowne Fair Photo [LFP] 035

AT THE FAIR

by Bill Boulton

reprinted with edits from

**FRONT OF LEEDS AND LANS-
DOWNE HISTORICAL SOCIETY
Newsletter#2 May 1994**

The 1869-82 minutes of the Lansdowne Agricultural Society show an interesting evolution in the affairs of the Society. As the first fair was held in 1864, organization is well under way when the June 1869 meeting was held at Weston's Hotel [King St. E burned & demolished 2012] The fair was still being held at the end of Grand Trunk Avenue with the Drill Shed on King Street used for displays. Fair dates are a single day in early October.

The Society, from the beginning, was interested in the improvement of agriculture. In 1869, it organized a fall ploughing match and carried this on for at least ten years. They also kept rams and boars, and later beef breed bulls, for the use of members in improving their stock lines. Sunprize Oats were purchased for \$49.75 in 1870 and Red Clover for \$45.00 in 1873 to "be divided equally amongst all subscribers". With membership of 60 cents in 1872, you received a copy of "Canada Farmer" and the next year the "Farmer's Advocate".

In 1874, a committee was named to "provide a field or proper place to hold the cattle" for the fair. A piece of land was leased from Alex Cornett for fairgrounds. Samuel Moorehead was contracted to build a six-foot high board fence around the grounds. Rent for the land appears to have been \$50 per annum. The fence cost \$150. There was no money available for buildings so



Photo by J. Saynor

three directors offered a loan. Some type of building must have been built because, on October 4, 1874, Mr. Sam Johnston was to pick up all lumber and articles on the grounds and place them in the building, lock it and the gates.

In February, 1976, tenders were called "for erection of a building, 24' by 40'. 14' posts, timber 8 by 8 - 5 bents - sheeted up and down with good hemlock "lumber and battened with battens 3" by 1" to be framed with two girts so as to have 4 nailings, 6 windows, 2 doors 6' by 9' ". The successful bidder was Daniel Graham. The only mention of cost is payment of \$100 on account and the remainder as soon as possible. This building, we believe, still stands and is now used for poultry and pets.

No further mention is made of additional buildings, but they must have been built. The minutes note in June 1879 "joist and floor main building and put such stairs as they think best" and in 1882 "build wings to the Agricultural Hall, improve cattle stalls and make first class horse track". The secretary's office was probably built in 1880 as the Board met there on the morning of the fair.

(cont'd from previous page)

While the ladies may have attended the fair, that seems to have been their only activity. 1874 is the first mention of lady judges for domestic manufacture classes. In 1876, lace and wool work, pair hose, and scarf displays were entered in men's names, most likely the husband of the maker.

In 1880, a committee of ladies was appointed to revise class K as the "board feels itself incompetent". To the end of these minutes, no female directors were elected and only some 100 years later was a woman elected president. [Elaine Steacy, 1988-9]

For the whole of this period [1864-1882], only two men served as President, Wallace [AKA Wm.] Beatty until 1874, then John Cook. George F. Deane was Secretary Treasurer at a salary of \$7 in 1869, raised to \$15 by 1882. Annual meetings were held in January at Weston's Hotel until 1877, then at the Stewart House, the site of the present Post Office, in 1878 and 1881. In 1879-80 and 82, meetings were held at Dickey's Hall (location unknown) where they paid Mr. John Dickey \$1.00 for its use.



Harness Racing n.d.

LFP 040

LANS DOWNE FAIR 150 YEARS

Excerpted: Newsletter #41, 2014

material for this article has been gathered from three sources:

William Beatty's Diary, Agricultural Society minutes and newspaper clippings. [credit]

HORSE RACING

Horse racing has been a part of the fair from the beginning. Before they had a fairgrounds, racing took place on King Street. The starting line was at the top of the hill in the west (Freda White's present home) and finished at a maple tree in the east (presently Lackie's Feed). The judge and timer sat on a limb in the maple tree. A track must have been established before 1890, as 3 additional acres of land was purchased in 1892 to improve the track. It was improved again in 1905 at a cost of \$105. In 1922 more land was purchased to make the track one half mile. Local owners and drivers were quite common. In 1920 Tilly Jim owned by Archie Johns[t]on won three 3rd places. Mr. Johns[t]on also raced Robert Murphy. In 1922 it took 13 heats to declare a winner.

The final winner was Ripple Audobon, another local horse. Lansdowne Fair is one of the few fairs to still sponsor races. It has one of the best built and maintained tracks in Eastern Ontario. Since 1986, Steacy Stables has used the track as a training facility, and maintains the track.

ENTERTAINMENT

In the early days, it was often local bands that provided entertainment. In 1876, it was the Lansdowne brass band. Several times it was the Gananoque Senior or Junior Town Band. Once it was a brass band from the Gananoque Carriage Works who were paid \$10. The entertainment was usually in the town hall. In 1930, the Royal Ambassador Orchestra played for a concert in the Town Hall and a dance in Peck's Hall. Many well-known names have played the fair over the years, including The Carleton Show Band, Gordie Tapp, Ann Banks, Wayne Rostad, Ronnie Prophet, Gail Gavin, and many more. For the past few years, Saturday evening has hosted the demolition derby.

LANSDOWNE ARENA

In 1931 a group of local men formed the Lansdowne Arena Company. Capital stock was \$20,000 with shares selling for \$10. In March a delegation met the Fair Board with the objective of having an indoor rink built. The Board agreed to take \$1,500 in stock and furnish the land. It would be leased to the arena company for 99 years, with the fair having use of the building from April to October for fair purposes. It was constructed and open the next year. When the Brockville arena burned in 1937, the Brockville Magadomas hockey team played their home games here.

Through the years the arena was allowed to deteriorate. In 1969 a committee from the Arena Company discussed dissolving the company. Two years later they were back discussing an addition to the arena to house new dressing rooms and washrooms. Land

was not available, and the proposal died. In 1976, the Arena Company offered to sell the building to the Agricultural Society for \$1.00. The Society accepted the offer. Thus the Lansdowne Arena came to an end.

The fair now used the building for cattle during the fair and for storage the remainder of the year. In June 1987, the old arena was destroyed by fire. This left the fair with no shelter for cattle. A 40' X 80' tent was rented for the 1987 fair. Plans were drawn for a 60' x 100' replacement building. A new building costing \$40,000 was built, using \$25,000 insurance money and a great deal of volunteer labour. The ribbon cutting for this new building took place after the fair parade in 1988.

1891 Ribbon Artifact LTI Archives 2016-043

1894 Ribbon Artifact LF Collection



160th Lansdowne Fair [from the website: lansdownefair.ca]

Music & Entertainment

Epic Eagles – Tribute Show
World’s Finest Shows - Midway

Armistead Pavilion Music

Dave Ralph
Cheryl Adrain
Gary & Mickie Code

Meet the Keepers
Fairy Tale Loft

Dr Kaboom’s Mini Mobile Circus
Superdogs
Brockville Infantry Co. 1862

Kid’s Corner

Kiddie Pedal Tractor Pull
Baby Show
Fair School Section
Library Contest
Junior & Intermediate Classes

Events

Western Horse Show
Pony Pull
Miniature Horse Show
Horse Draw
Heavy Horse Show
Poultry & Pigeon Stock
Fair Ambassador
Youth Ambassador
Senior Sovereignty
Mini King & Queen Contest
Saddle Up Talent Show
Truck & Tractor Pulls
Decorating Contest
Antique & Classic Car Show
Antique Tractors & Machinery
Demolition Derby
Chainsaw Challenge
Cow Milking Competition
Cow Chip Bingo
Tug of War

Homecrafts

Commercial Section A
Veg & Farm Produce Section B
Floral Section C
Junior & Intermediate Div. F
Handicrafts Section G
Culinary Arts Section H
Hobby Crafts Section I
Visual Arts Section J
Photography Section K
Antiques & Collectibles Section L
Quilting Section P
LAFR Garden & Flower Colour Theme



Sheaf Competition LFP 052



Quilt 2009 LFP 084

Homecrafts—Details from the Prizebook 2024

Commercial

Section A

CONTACT: Chris Lappan
ENTRY FEE: 10% of prize money.
PRIZES: \$12 - \$10 - \$8
Best in Show – Sponsored by Green Tractors Kingston.
 \$100 in-store voucher. Selected by Judge
Most Points – Sponsored by Willows Agriservices Ltd.
 \$100 in-store voucher

RULES:

- All entries to be grown by the exhibitor.
- Seed must be from either of the previous two years' growth.
- All grain and corn must be of the last two years' crop.
- All hay must be of this year's crop.
- Hay exhibits will consist of 2 four-inch slices from a bale; one for judging, one for display purposes.
- Forage and grain exhibits to be shown in plastic bags or wrapped in plastic.

Seed and Grain

CLASS

1. Oats, 5 lbs
2. Barley, 5 lbs
3. Sheaf of oats, 3" in diameter
4. Sheaf of barley (2 or 6 rows), 3" in diameter
5. Sheaf of fall wheat, 3" in diameter
6. Sheaf of grain or silage corn, 8 stalks
7. Shelled corn, 5 lbs
8. Soybeans, 5 lbs



Hay

9. Baled hay, 75% legumes (1st cut)
10. Baled hay, 75% grass (1st cut)
11. Second cut legume hay
12. Second cut grass hay
13. Flake of Straw



Silage

14. Haylage, 8 lbs
15. Flake of baled haylage
16. Corn Silage, 8 lbs

Quilting

Section P

CONTACT: Sheila Blodgett

COMMITTEE: Dorothy Webster, Rachael Cross

ENTRY FEE: 10% of prize money

ROSETTE – BEST OF SHOW: Classes 1 - 21

PREMIER EXHIBITOR: Highest points in classes 1 - 21

RULES:

- **MUST BY CONSTRUCTED & QUILTED BY THE EXHIBITOR**
- Hand quilted quilts in classes 6, 7 & 8 must have the pattern named on the Entry Tag.
- All machine quilted quilts must have visible machine stitching.
- Must attach (SMA) material sample(s) to the Entry Tag!
- When minimum size is given, quilts may be larger.
- All quilts in classes 6 - 8, 11 - 13 and 16 -18 are automatically entered in the O.A.A.S. competitions if they measure a minimum of 324" on the perimeter.

CLASS

Quilt Blocks - SMA

PRIZES: \$8 - \$6 - \$4

1. 1 quilt block, pieced, one edge mounted on cardboard
2. 1 quilt block, hand-appliquéd, one edge mounted on cardboard
3. 1 quilt block, machine-appliquéd, one edge mounted on cardboard

Hand Quilted - SMA

PRIZES: \$20 - \$12 - \$10

4. Table runner
5. Small quilt (e.g. crib quilt), pieced or appliquéd by hand or machine, minimum size 30" x 40"
6. Quilt, pieced, minimum 39" x 76"
7. Quilt, hand or machine appliquéd, minimum 39" x 76"
8. Quilt, any size, any technique

Machine Quilted - Domestic Machine - SMA

PRIZES: \$20 - \$12 - \$10

9. Table runner
10. Small quilt (e.g. crib quilt), pieced or appliquéd by hand or machine, minimum size 30" x 40"
11. Quilt, pieced, minimum 39" x 76"
12. Quilt, hand or machine appliquéd, minimum 39" x 76"
13. Quilt, any size, any technique

More Homecrafts — Lansdowne Fair Prizebook 2024

Vegetables & Farm Produce

Section B

CONTACT: Theresa Vretteas

COMMITTEE: Brianna Moore

ENTRY FEE: 10% of prize money.

PRIZES: \$5 - \$4 - \$3

ROSETTE - BEST OF SHOW: Classes 1 - 37

PREMIER EXHIBITOR: Highest points in classes 1 - 37

RULES:

- Display entries on white plate, **need not be paper**, unless otherwise specified. All vegetables must be grown by the exhibitor
- Eggs to be clean but not washed (no visible dirt, stains or shiny surfaces)

CLASS

1. Beans, green bush, stems attached 5 pods
2. Beans, yellow wax, stems attached 5 pods
3. Beans, novelty (not green or yellow stems at) ... 5 pods
4. Beets, table, tops removed to 1", root on 3
5. Broccoli 1 head
6. Cabbage, neatly trimmed 1
7. Carrots, baby, tops removed to ½" 3
8. Carrots, table, tops removed to ½" 3
9. Cucumbers, slicing 3
10. Cucumbers, pickling 3
11. Herb, 1 variety, 3 stems, shown in water, named 3
12. Lettuce, displayed in water 1 head
13. Onions, green, tops cut 6 - 8" over white root 3
14. Onions, table, tops trimmed to 1", root ½" 3
15. Peas, snow, in pods 3
16. Peas, table, in pods 3
17. Peppers, hot, named 3
18. Peppers, sweet 3
19. Potatoes, red, named, dusted off, not washed 3
20. Potatoes, white, named, dusted off, not washed 3
21. Rhubarb, 2" fan leaf, do not trim bottom, tied, no plate needed 3
22. Small Fruit, named 5
23. Swiss Chard, standing in water 3 stalks
24. Squash, summer, any variety (e.g. Zucchini, scallop). 3
25. Tomatoes, green, leave calyx on 3
26. Tomatoes, cherry/small fruit, on full truss
27. Creative arrangement using vegetables, edible flowers and herbs, minimum 5 varieties, any container
28. Jumbo - one overgrown vegetable, judged by size and weight, no plate needed, named
29. Garlic, cleaned, stem trimmed to 1", roots ½" .. 3 bulbs
30. One dozen eggs, white shell
31. One dozen eggs, brown shell
32. One dozen eggs, any other variety or shell colour
33. One 500 ml glass bottle of maple syrup, DARK
34. One 500 ml glass bottle of maple syrup, LIGHT
35. One 250 ml jar honey, medium or dark
36. Unusual/funny looking vegetable 1 specimen
37. Any other vegetable, not listed, named 1 specimen

ONTARIO ASSOCIATION OF AGRICULTURAL SOCIETIES COMPETITIONS

38. Maple Syrup Competition

Pure Maple syrup, Ontario Grade A – Amber. One 500mL glass bottle of amber maple syrup

PRIZES: \$20 - \$12 - \$10

39. Liquid Honey Competition

Pure liquid honey, Ontario #1, white. One 500mL glass bottle of white Ontario honey

PRIZES: \$20 - \$12 - \$10

FAMILY FUN COMPETITION!!



DECORATING CONTEST

Help us advertise the Lansdowne Fair by building a display on your property. Open to anyone, including private residences, schools, organizations and businesses, but only one entry per property, please. Businesses may use a window display. No Entry Fee is required.

Contact: Kim George, by

Monday, July 15, 2024.

PRIZES: 1st - \$40, 2nd - \$30, 3rd - \$20

RULES:

- Display of any size or shape (using any materials – e.g. bales of straw/hay, vehicle, farm implements, etc.) to promote the fair. Display must advertise the fair dates, July 18-21.
- Judging will take place the week of the fair and winners will be announced during the Opening Ceremonies.

JUDGING CRITERIA:

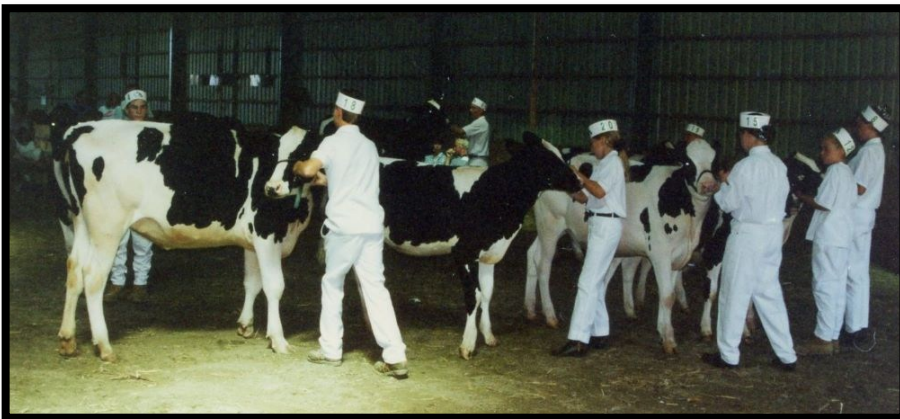
Originality 40%, Visibility of Dates 30%, Overall Appearance 20%, Craftsmanship 10%



Vegetable Competition 1991 LFP 040



Decorating Contest 2009 LFP 077



Getting lined up... 1994



LFP 074b Sheep Shearing 2009 LFP 083



Maintenance, always... 2006 LFP 055



Baby Competition 1990 LFP 017

Editors' Note: By now you've recognized that we've devoted this issue to the Fair. We appreciate the co-operation of the Lansdowne Fair Board for this project and, in particular, the input and effort of Donna Dempsey & Wilhelmina Lacelle.

WM. BEATTY DIARIES 1838 – 1892

The Historical Society purchased a photocopy of the Beatty Diaries in 2000 and last published an excerpt up to June 1870 in Newsletter #54, 2022. In 1861 William purchased the farm on the east side of Prince St. north of King St. in Lansdowne Village, moving there with his wife Ellen (nee Armstrong) and children. A new house [1215 Prince St., currently listed on the Heritage Register] was constructed over two years and completed Nov. 1863. William farmed, but was also a community leader, laying out area roads, involved in the construction of Chalmers Presbyterian Church, and as president [shown as Wallace] of the Agricultural Society from 1864-1874.

William Beatty - Fair Related

reprinted with edits from Newsletter #41, 2014

- Jan 9, 1864 Went to agricultural meeting at Johnston's [Rapids Valley] schoolhouse
Was elected president.
- Mar 5 Went to an Agricultural meeting at Johnston's school house.
- Jan 4, 1866 Went to Mallorytown to the annual meeting of their Agricultural Society.
After a good deal of squabble, it broke up entirely and divided the funds.
- Jan 13 Went to annual meeting of our Agricultural Society. Was put in as
director.
- Apr 7 Went to agricultural meeting at the Station. [contemporary Lansdowne]
- June 2, Went to agricultural meeting at Waldrons.
- July 11 Attended our fair at the Station. It was a good fair. There was a good
many people at it.
- Mar 29, 1867 I attended agricultural meeting at Waldron's. There were only six of
directors there.
- July 19 Raising of the Drill Shed.
- Sept 8 Went to fair at Station, There was a good turnout and a fine day.
- Jan 9, 1869 Attended the annual meeting of Agricultural Society. Was elected
President.
- Apr 26 Drew 26 bushel of peas for Agricultural Society.
- Jan 13, 1870 I went to the annual meeting of the Agricultural Society at Weston's.
Was elected President.
- Jan 11, 1871 Attended Agricultural Society meeting at Weston's Hall.
- Oct 12 A fine day for our fair. Took 1st prize on a yearling bull, 2nd on two
ewes.
- July 8, 1879 We all went to a strawberry festival for our church in the Agricultural
Hall. The Escott Band was up.

Fair Board 2024

Lansdowne Agricultural Society

15 Directors 5 Executive Officers

25 Associate Directors 1 Honourary Member

<https://lansdownefair.ca>

facebook.com/LansdowneFair

Fairground: 1186 Prince St., Lansdowne

Mailing Address:

Lansdowne Agricultural Society

P.O. Box 119

Lansdowne, ON K0E 1L0



Pig Scramble 2000

LFP 021



Legion Branch 96 - City of Brockville Pipes & Drums 2000

LFP 018

The Evolving Role of the Lansdowne Junior Fair Board

by Wilhelmina Lacelle



2009

LFP 079

The Junior Fair Board was formed on March 19, 1987 by Victoria (Vicki) Lynch-Grier and Bruce Turner. They both believed that there was a need for youth to become more involved with the Lansdowne Agricultural Society activities. There were thirteen members ages 12-19. Many were children of senior board members. These Juniors had to demonstrate that they were team players with positive attitudes. The group met once a month to share ideas and projects. No swearing was allowed. Their leaders challenged them to come up with ideas for family entertainment.

A President, Vice-President, Secretary and Treasurer were elected each year. At one time there were as many as thirty participants.

These youngsters had a social side that very much enjoyed having fun together. They raised money by selling tickets on a calf, a Wishing Well, a patio set, a 50/50 draw and a weekend getaway. They also organized many silent auctions and sold souvenir fair hats.

In between selling tickets, this energetic bunch planted flowers, painted the rail fence around the race track, cleaned and painted Old McDonald's Barn, painted the inside of the Red Exhibit Building, put up wall panelling, painted the grandstand, assisted in the annual craft sale and collected for the Canadian Cancer Society. They were kept very busy on the first day of the

Fair helping to display exhibits. They also proudly displayed their banner while walking in the Saturday parade through the village of Lansdowne.

Vicki Grier mentioned that there was always an "interesting" reason when a Junior Fair Board member couldn't show up to sell tickets. Some of the kids were also showing 4-H calves and farm cattle, as well as working summer jobs.

On Winter Fun Day in 2002, the group took charge of the canteen, looked after the children's games and helped their seniors in multiple ways.

In 2003, after the opening ceremonies, the Junior Fair Board members took to the stage and sang an original song dedicated to all the volunteers who make the Fair Board a reality. Before this Fair, they participated in the remodelling of Old McDonald's Barn.

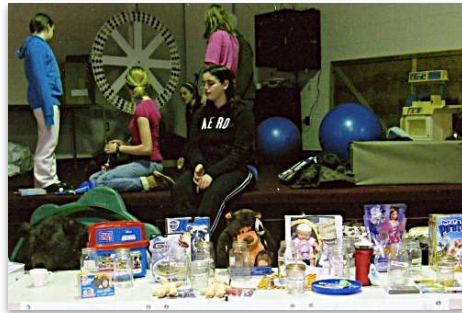
In 2003, Co-President Wendell Webster declared the Fair a roaring success due to the dedicated volunteers. Walking around the grounds he said it was obvious someone had done a lot of work and he gave a nod to the Junior Fair Board.

Their role was varied but Junior Fair Board members were responsible for activities before, during and after the Fair. As only one example, in 2006 kids could buy tickets for 25 cents



Parade 2000

LFP 019



2010

LFP 085



Pie Eating 2012 thnx G. Baker

to win any of the items that had been collected and displayed on a table in the Lansdowne Community Building. Winners' names were drawn at 3 pm on the last day of the Fair. "It was a big hit for kids", says former leader, Kathy Baker.

Pie eating and lemon sucking contests were held during the Fair weekend. Along with organizing these popular events, the group did most of the announcing for them.

Theresa Vretteas and Taylor Ruddock, both educators at the Thousand Islands Elementary School (TIES), are the Junior Fair Board leaders as of 2022. The age limit now is 10-17 years of age. These volunteer leaders encourage a team approach that emphasizes respect and cooperation among all members. They now have an eager and growing group who are helping when requested by the Fair Board and by other community organizations such as LAFR (Lansdowne Association For Revitalization). They have volunteered at the Spooktacular Halloween Party, Black Creek Rodeo and clothing sale. They have also supervised games on Seniors Day at the Fairgrounds and offered help wherever needed. The Junior Fair Board members are obvious at

community events as they are everywhere with their volunteer T-shirts.

The Junior Fair Board will have acquired many skills, e.g. teamwork, project management and public speaking that can easily be transferred to whatever future positions they may hold. We anticipate that one day, some of the Junior Fair Board members will hold executive positions in the Lansdowne Agricultural Society Board of Directors and be strong leaders, making a difference in our community.



2024

Photo thanks to T. Vretteas

Condolences



Cheri Dorey

[https://
www.tompkinsfuneralhome.ca/
obituaries/Cherilee-Anne-Dorey?
obId=32747794](https://www.tompkinsfuneralhome.ca/obituaries/Cherilee-Anne-Dorey?obId=32747794)



Ginny Gibbons

[https://
www.tompkinsfuneralhome.ca/
obituaries/Ginny-Gibbins?
obId=31188863](https://www.tompkinsfuneralhome.ca/obituaries/Ginny-Gibbins?obId=31188863)



Shirley Gibson Languille

[https://
www.jamesreidfuneralhome.com/
obituaries/Shirley-Languille?
obId=32853107](https://www.jamesreidfuneralhome.com/obituaries/Shirley-Languille?obId=32853107)



George Burns

[https://barclayfuneralhome.com/
tribute/details/4099/George-Burns/
obituary.html](https://barclayfuneralhome.com/tribute/details/4099/George-Burns/obituary.html)



**Audrey Newell,
Honourary Member**

[https://barclayfuneralhome.com/
tribute/details/3994/Audrey-
Newell/obituary.html](https://barclayfuneralhome.com/tribute/details/3994/Audrey-Newell/obituary.html)



June Gilbert

[https://
www.tompkinsfuneralhome.ca/
obituaries/June-Gilbert?
obId=30685551](https://www.tompkinsfuneralhome.ca/obituaries/June-Gilbert?obId=30685551)



Douglas MacKintosh

[https://
www.tompkinsfuneralhome.ca/
obituaries/Douglas-Mackintosh?
obId=30441674](https://www.tompkinsfuneralhome.ca/obituaries/Douglas-Mackintosh?obId=30441674)



Harold Haig

[https://
www.tompkinsfuneralhome.ca/
obituaries/Harold-John-Haig?
obId=31341802](https://www.tompkinsfuneralhome.ca/obituaries/Harold-John-Haig?obId=31341802)



James Boyd

<https://barclayfuneralhome.com/tribute/details/3873/James-Boyd/obituary.html>



James Lappan

<https://barclayfuneralhome.com/tribute/details/3927/Jim-Lappan/obituary.html>



Thelma Jones

<https://barclayfuneralhome.com/tribute/details/3933/Thelma-Jones/obituary.html>

Heritage Organization Development Grant
Once again, we received a grant for 2023-2024. It will be used to cover the cost of preparing and distributing our newsletters. ***The Society thanks the government of Ontario for its continued support.***

THEN & NOW— IVY LEA WATERFRONT



1926 LTI Archives 2012-16-023



2023 winter J. Saynor

YOUR NEWSLETTER 🍷 YOUR NEWSLETTER 🍷 YOUR NEWSLETTER

We welcome you to contribute articles on any appropriate subject. Issue #57 will be published March 2025 with a deadline of Feb 15. The theme of #58 Fall/Winter 2025 will be "Immigration" and we are especially interested in your family's stories.

Leeds & 1000 Islands Historical Society MEMBERSHIP FEES

General (2 votes) - \$20 Corporate - \$50 Lifetime - \$350

Available at any meeting, by mail, or on-line <https://lthistoricalsociety.org>

Membership term is Sept 1 to Aug 31. You may pay for several years at a time

2024 Presentations & Events

March 18

Penelope Deering

**History of Rug-
Hooking in
Newfoundland &
Canada**



Photo thanks to J. Gaylord



Photo thanks to B. Lee-Daigle

April 5

Robert Burtch

**History of
Willowbank
Cemetery**



Photo thanks to A. Kelman



Photo: Google Maps

May 13

Guy Larocque

**Science and Art
of Heraldry**



Photo thanks to N. Perron

The mission of the Royal Heraldry Society of Canada and its Branches is to promote the Art and Science of Heraldry, particularly Canadian heraldry, and to encourage an interest in the subject among Canadians. Since the Society's foundation more than three decades ago the RHSC has never lost sight of its objectives and continues to this day informing and educating Canadians and assisting them and their institutions in the acquisition of properly granted coats of arms. During its first twenty-five years, the Society was the driving force toward the establishment of Canada's own body for the granting of arms.

Source: G. Larocque

Sat. May 11

**Tackaberry
Collection Tour,
Athens**



Photo thanks to R. Burtch



Photo thanks to R. Burtch



Photo: J. Saynor

Sept 16
Robert Burtch & Stephen Heaton
History of Front Porches in Local Architecture



Photo: J. Saynor



Photo thanks to G. Larocque

Sat Oct 26
Lansdowne Craft Fair



Photo thanks to G. Larocque



Photo: J. Saynor

Oct 28
George Horton
Local Production & History of Maple Syrup



Photo: J. Saynor



Photo thanks to G. Olivier

Wed Nov 13
Trip to former Escott School
Host – Linda Cyr



Photo: J. Saynor



Members 2024-2025

Adams, Winston & Wilma	Gaylord, Janet & Dan
Anderson, Wayne	Geekie, Nancy
Antoine, Kathi	Gemmell, John
Arrowsmith, Brenda	Gibbins, Bob
Baldock, Dan	Gibbins, Chris
Bickerton, Doug	Gilbert, Doug
Bouillon, Mary	Goddard, Elizabeth
Boyd, Elizabeth	Graczol, Margaret
Bradley, Betty	Graham, Katherine
Bryan, Elaine	Grebby, John & Marie
Burns, Don & Pat	Grier, Ross
Burns, Connie	Griffin, Robert
Burns, Joan	Handa-Peters Cheryl
Burtch, Elizabeth	Hawkins, Tim
Burtch, Kathleen	Heddon, Amy
Burtch, Robert & Stephen Heaton	Hewitt, Nattanya
Cave, Nelson	Hoefel, Anne
Chisamore, Don & Danny	Houston, William
Chisamore, Margaret	Hunt, Anne
Chown, Jane	Huntley, Bruce & Pat
Clancy, Ray	Jackson, Andrew
Clark, Shirley	Johnston, Jean
Cockerline, Glenn	Kaiser, Margaret
Cornett, Mary Joan	Kenny, Colette
Craig, Bruce & Betty	Kelman, Angela
Cross, Heather	Lacelle, Wilhelmina & David
Cullen, Sandra	Lackie, Bob & Kay
Cunningham, Chris	Lamont, Ron & Diane
Cyr, Linda	Langton, Jim
Daigle, Betty Lee-Daigle & Francois	Lapointe, Yolande
Day, David & Marie	Larocque, Guy & Nathalie Perron
Dempsey, Donna & Clark	Latimer, Ila
Desjardins, Melanie	Létourneau, Marcus
Doak, Robert	Lem, Neila
Donevan, Louise	Lolley, Brenda & James
Dorey, Donnie & Gerry	Lynch, Carol
Dorey, Mark	Lynch, Patti
Dunbar, George	Mabee, Keith
Elliot, Robert	MacKintosh, Blu
Fodey, Terry & Femia	Macklem, Katherine 18
Foley, Bob	MacLeod, John & Marion
Foley, Bruce & Joan	MacNeill, Ron & Giselle
Foley, Donna	Mallory, Glenna

Mallory, Linda
Matthew, Mary Ellen &
Doug

McCrary, Earl
McDonald, Blair
McDougall, Marilyn
McKay, Marion
Mercier, Pierre
Merkley, Wendy
Michie, Rose & Bob
Miller, Margot
Miller, Steve & Pam
Moir, Ronald
Moorhead, Lorne
Moran, Terry
Murchie, Dan
Nalon, John & Barbara
Nash, Christine
Nuttall, Ben & Hilda
Nuttall, Jay
Nuttall, Linda &
Mark Chojnacki
O'Connor, Michael
O'Grady, Chris
Offord, Hoss & Sandi
Olivier, Glenda & Bob
Page, Steve
Peck, Gary
Petrie, Kathy
Phillips, Brian & Dianne
Piche, Noelle
Rath, Norman
Reid, Dennis
Roantree, Dan
Robertson, Mary Reid
Rogers, Patricia Q.
Running, Murray & Diane
Saynor, James &
Ellen Fibison
Scharf, Myrna
Schijns, Marlene
Shaver, Carol
Shaw, Art
Shields, Jacqueline
Shire, Dan & Karen
Sly, Keith
Smid, Sally
Smith, Susan W.
Smith-Gatcke, Corrinna
Sorensen, John & Molly
Struthers, Velma
Swan, Marion

Tedford, Roger & Connie
Thorburn, Jon
Truesdell, Leslie
Vanwalraven, Nick
Veenstra, Tracey
Warburton, Kathleen
Warren, George & Bette
Warren, Glenn
Webster, Beatrice
Webster, George &
Rebecca
Webster, Jean
Wells, Dave & Sandra
Westendorp, Joe &
Claire
White, Cynthia
Wright, June
Yung, Caroline

Honourary Members

Boulton, William
Hewitt, Ted & Pat
Lindsay, Alan & Carole
White, Freda

Corporate Members

FoxRun By the River
Retirement Home
Horton Homestead
Maple Syrup
Lucky Dollar
Todd Grier Excavating